

## GMFB Antibody

Catalog No: #42956

Orders: [order@signalwayantibody.com](mailto:order@signalwayantibody.com)Support: [tech@signalwayantibody.com](mailto:tech@signalwayantibody.com)

## Description

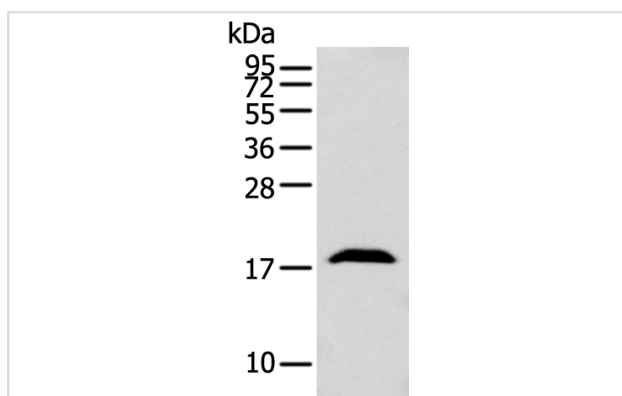
Product Name	GMFB Antibody
Host Species	Rabbit
Clonality	Polyclonal
Purification	Antigen affinity purification.
Applications	WB IHC
Species Reactivity	Hu Ms
Specificity	The antibody detects endogenous levels of total GMFB protein.
Immunogen Description	Fusion protein of human GMFB
Target Name	GMFB
Other Names	GMF
Accession No.	Swiss-Prot#: P60983Gene ID: 2764
Uniprot	P60983
GeneID	2764;
Calculated MW	17kd
Concentration	1.1mg/ml
Formulation	Rabbit IgG in pH7.4 PBS, 0.05% NaN <sub>3</sub> , 40% Glycerol.
Storage	Store at -20°C

## Application Details

Western blotting: 1:500-1:2000

Immunohistochemistry: 1:100-1:200

## Images



Gel: 12%SDS-PAGE

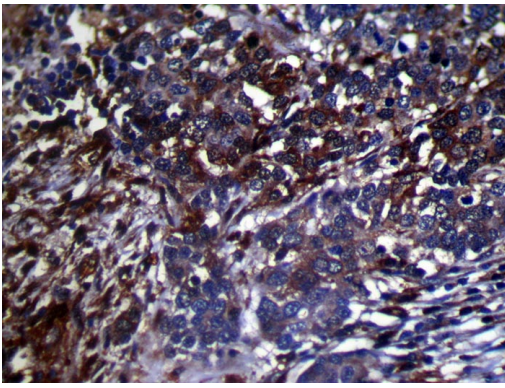
Lysate: 40 µg

Lane: Mouse brain tissue

Primary antibody: 1/250 dilution

Secondary antibody: Goat anti rabbit IgG at 1/8000 dilution

Exposure time: 30 seconds



Immunohistochemical analysis of paraffin-embedded Human Liver cancer tissue using #42956 at dilution 1/100,

## Background

This protein, which is phosphorylated following phorbol ester stimulation, is important for the nervous system. It causes brain cell differentiation, stimulates neural regeneration and inhibits tumor cell proliferation. Overexpression of GMF in astrocytes has been shown to enhance brain-derived neurotrophic factor (BDNF) production. GMF expression is increased by exercise, and the protein is crucial for exercise-induction of BDNF. Through BDNF production, GMF appears to play a role in neuroprotection. In thymoma, T-cell development is maintained by GMF, being produced by the tumor cells.

Note: This product is for in vitro research use only