

RFK Antibody

Catalog No: #42958

Orders: order@signalwayantibody.comSupport: tech@signalwayantibody.com

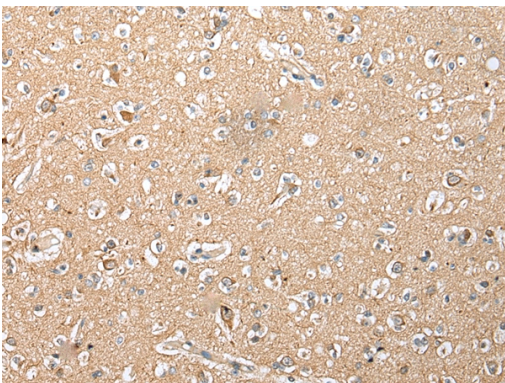
Description

Product Name	RFK Antibody
Host Species	Rabbit
Clonality	Polyclonal
Purification	Antigen affinity purification.
Applications	IHC
Species Reactivity	Hu
Specificity	The antibody detects endogenous levels of total RFK protein.
Immunogen Type	protein
Immunogen Description	Full length fusion protein of human RFK
Target Name	RFK
Other Names	RIFK
Accession No.	Swiss-Prot#: Q969G6Gene ID: 55312
Uniprot	Q969G6
GeneID	55312;
Concentration	0.9mg/ml
Formulation	Rabbit IgG in pH7.4 PBS, 0.05% NaN ₃ , 40% Glycerol.
Storage	Store at -20°C

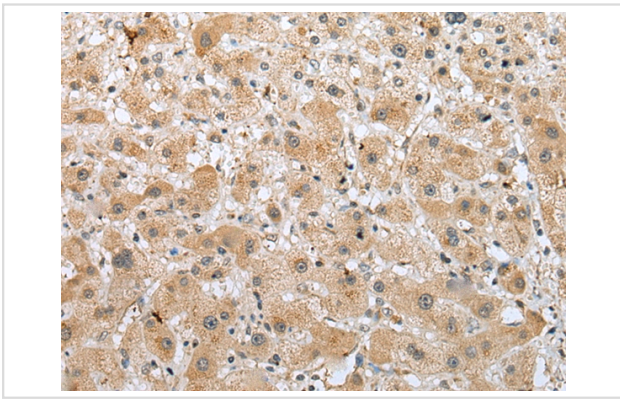
Application Details

Immunohistochemistry: 1:25-1:100

Images



Immunohistochemical analysis of paraffin-embedded Human brain tissue using #42958 at dilution 1/25.



Immunohistochemical analysis of paraffin-embedded Human liver cancer tissue using #42958 at dilution 1/25.

Background

Riboflavin kinase (RFK; EC 2.7.1.26) is an essential enzyme that catalyzes the phosphorylation of riboflavin (vitamin B2) to form flavin mononucleotide (FMN), an obligatory step in vitamin B2 utilization and flavin cofactor synthesis (Karthikeyan et al., 2003 [PubMed 12623014]).

Note: This product is for in vitro research use only