

## DHDH Antibody

Catalog No: #42959

Orders: [order@signalwayantibody.com](mailto:order@signalwayantibody.com)Support: [tech@signalwayantibody.com](mailto:tech@signalwayantibody.com)

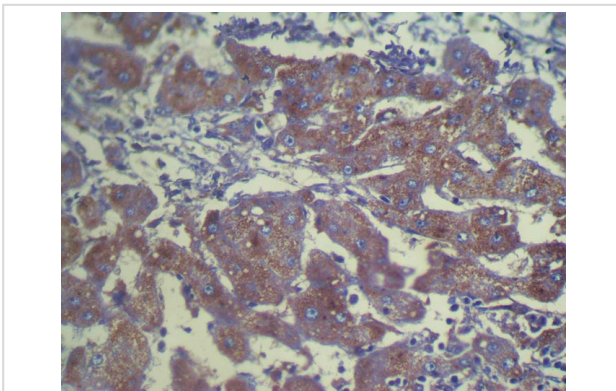
## Description

Product Name	DHDH Antibody
Host Species	Rabbit
Clonality	Polyclonal
Purification	Antigen affinity purification.
Applications	IHC
Species Reactivity	Hu
Specificity	The antibody detects endogenous levels of total DHDH protein.
Immunogen Type	protein
Immunogen Description	Full length fusion protein of human DHDH
Target Name	DHDH
Other Names	2DD; HUM2DD
Accession No.	Swiss-Prot#: Q9UQ10Gene ID: 27294
Uniprot	Q9UQ10
GeneID	27294;
Concentration	0.6mg/ml
Formulation	Rabbit IgG in pH7.4 PBS, 0.05% NaN <sub>3</sub> , 40% Glycerol.
Storage	Store at -20°C

## Application Details

Immunohistochemistry: 1:100-1:200

## Images



Immunohistochemical analysis of paraffin-embedded Human Liver cancer tissue using #42959 at dilution 1/100,

## Background

This gene encodes an enzyme that belongs to the family of dihydrodiol dehydrogenases, which exist in multiple forms in mammalian tissues and are involved in the metabolism of xenobiotics and sugars. These enzymes catalyze the NADP<sup>1</sup>-linked oxidation of transdihydrodiols of aromatic hydrocarbons to corresponding catechols. This enzyme is a dimeric dihydrodiol dehydrogenase, and it differs from monomeric dihydrodiol dehydrogenases in its high substrate specificity for trans-dihydrodiols of aromatic hydrocarbons in the oxidative direction.

---

Note: This product is for in vitro research use only