

CD1D Antibody

Catalog No: #42961

Orders: order@signalwayantibody.comSupport: tech@signalwayantibody.com

Description

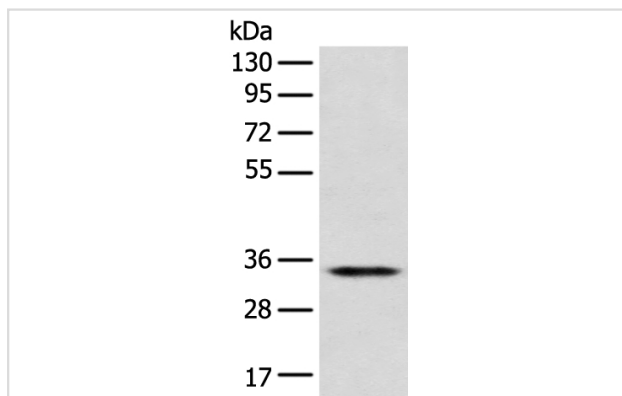
Product Name	CD1D Antibody
Host Species	Rabbit
Clonality	Polyclonal
Purification	Antigen affinity purification.
Applications	WB IHC
Species Reactivity	Hu
Specificity	The antibody detects endogenous levels of total CD1D protein.
Immunogen Type	protein
Immunogen Description	Fusion protein of human CD1D
Target Name	CD1D
Other Names	R3; CD1A
Accession No.	Swiss-Prot#: P15813Gene ID: 912
Uniprot	P15813
GeneID	912;
Calculated MW	38kd
Concentration	1.1mg/ml
Formulation	Rabbit IgG in pH7.4 PBS, 0.05% NaN ₃ , 40% Glycerol.
Storage	Store at -20°C

Application Details

Western blotting: 1:500-1:2000

Immunohistochemistry: 1:25-1:100

Images



Gel: 8%SDS-PAGE

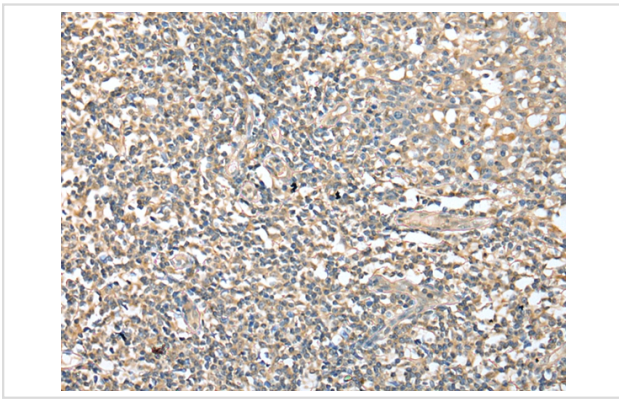
Lysate: 40 µg

Lane: Jurkat cell

Primary antibody: 1/300 dilution

Secondary antibody: Goat anti rabbit IgG at 1/8000 dilution

Exposure time: 30 seconds



Immunohistochemical analysis of paraffin-embedded Human tonsil tissue using #42961 at dilution 1/25,

Background

This gene encodes a divergent member of the CD1 family of transmembrane glycoproteins, which are structurally related to the major histocompatibility complex (MHC) proteins and form heterodimers with beta-2-microglobulin. The CD1 proteins mediate the presentation of primarily lipid and glycolipid antigens of self or microbial origin to T cells. The human genome contains five CD1 family genes organized in a cluster on chromosome 1.

Note: This product is for in vitro research use only