

LSAMP Antibody

Catalog No: #42962

Orders: order@signalwayantibody.comSupport: tech@signalwayantibody.com

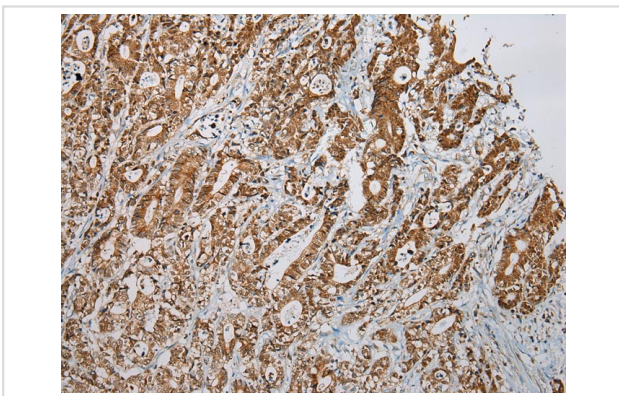
Description

Product Name	LSAMP Antibody
Host Species	Rabbit
Clonality	Polyclonal
Purification	Antigen affinity purification.
Applications	IHC
Species Reactivity	Hu
Specificity	The antibody detects endogenous levels of total LSAMP protein.
Immunogen Description	Fusion protein of human LSAMP
Target Name	LSAMP
Other Names	LAMP; IGLON3
Accession No.	Swiss-Prot#: Q13449Gene ID: 4045
Uniprot	Q13449
GeneID	4045;
Concentration	0.7mg/ml
Formulation	Rabbit IgG in pH7.4 PBS, 0.05% NaN ₃ , 40% Glycerol.
Storage	Store at -20°C

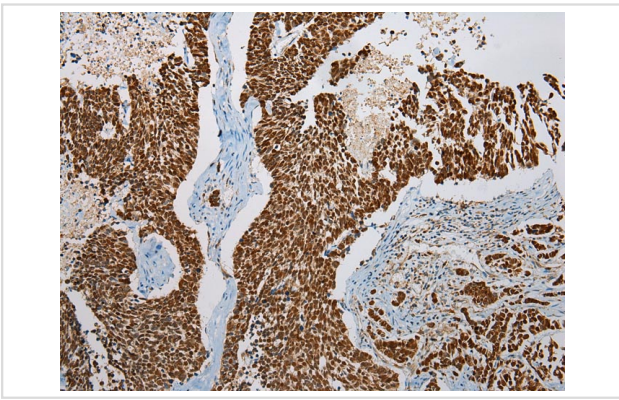
Application Details

Immunohistochemistry: 1:100-1:200

Images



Immunohistochemical analysis of paraffin-embedded Human Gastric tissue using #42962 at dilution 1/200,



Immunohistochemical analysis of paraffin-embedded Human Lung tissue using #42963 at dilution 1/200,

Background

The protein encoded by this gene is a neuronal surface glycoprotein found in cortical and subcortical regions of the limbic system. During development of the limbic system, this encoded protein is found on the surface of axonal membranes and growth cones, where it acts as a selective homophilic adhesion molecule, and guides the development of specific patterns of neuronal connections.

Note: This product is for in vitro research use only