

EEF1E1 Antibody

Catalog No: #42964

Orders: order@signalwayantibody.com

Support: tech@signalwayantibody.com

Description

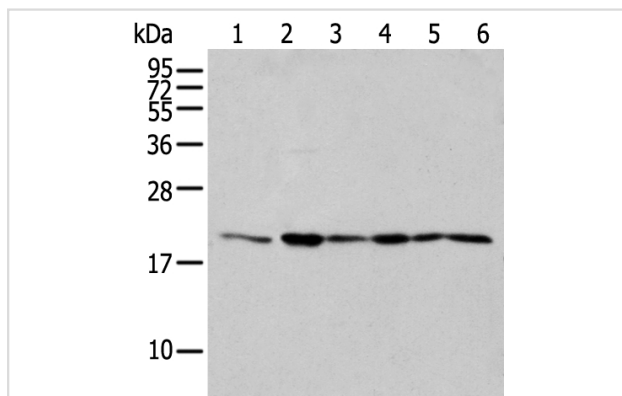
Product Name	EEF1E1 Antibody
Host Species	Rabbit
Clonality	Polyclonal
Purification	Antigen affinity purification.
Applications	WB IHC
Species Reactivity	Hu
Specificity	The antibody detects endogenous levels of total EEF1E1 protein.
Immunogen Type	protein
Immunogen Description	Full length fusion protein of human EEF1E1
Target Name	EEF1E1
Other Names	P18; AIMP3
Accession No.	Swiss-Prot#: O43324 Gene ID: 9521
Uniprot	O43324
GeneID	9521;
Calculated MW	20kd
Concentration	1.2mg/ml
Formulation	Rabbit IgG in pH7.4 PBS, 0.05% NaN ₃ , 40% Glycerol.
Storage	Store at -20°C

Application Details

Western blotting: 1:500-1:2000

Immunohistochemistry: 1:25-1:100

Images



Gel: 12%SDS-PAGE

Lysate: 40 µg

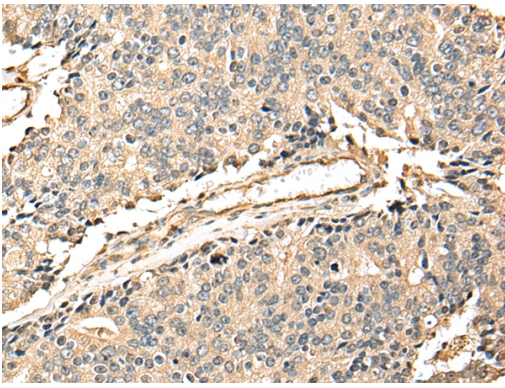
Lane 1-6: A431 cell, Hep2 cell, 293T

cell, Human testis tissue, Jurkat and A549 cell

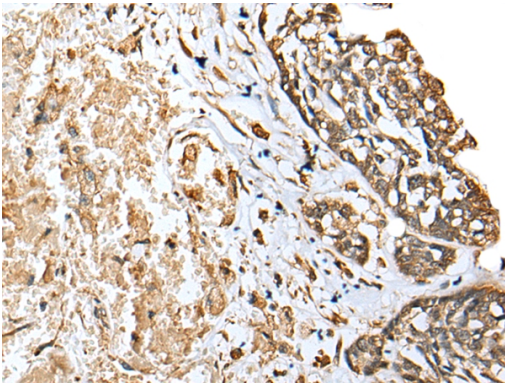
Primary antibody: 1/300 dilution

Secondary antibody: Goat anti rabbit IgG at 1/8000 dilution

Exposure time: 2 seconds



Immunohistochemical analysis of paraffin-embedded Human prostate cancer tissue using #42964 at dilution 1/25.



Immunohistochemical analysis of paraffin-embedded Human esophagus cancer tissue using #42964 at dilution 1/25.

Background

This gene encodes a multifunctional protein that localizes to both the cytoplasm and nucleus. In the cytoplasm, the encoded protein is an auxiliary component of the macromolecular aminoacyl-tRNA synthase complex. However, its mouse homolog has been shown to translocate to the nucleus in response to DNA damage, and it plays a positive role in ATM/ATR-mediated p53 activation. Alternative splicing results in multiple transcript variants.

Note: This product is for in vitro research use only