

GM2A Antibody

Catalog No: #42969

Orders: order@signalwayantibody.com

Support: tech@signalwayantibody.com

Description

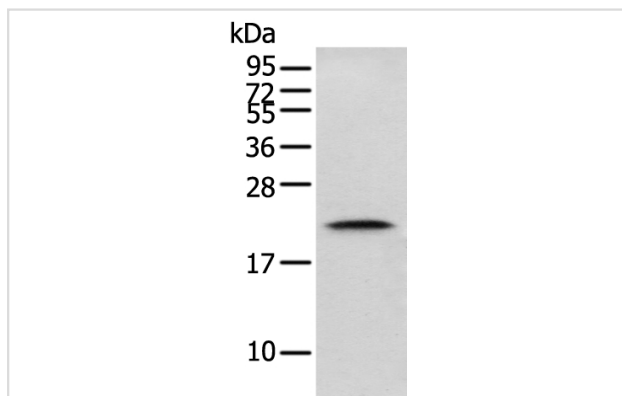
Product Name	GM2A Antibody
Host Species	Rabbit
Clonality	Polyclonal
Purification	Antigen affinity purification.
Applications	WB IHC
Species Reactivity	Hu Ms
Specificity	The antibody detects endogenous levels of total GM2A protein.
Immunogen Type	protein
Immunogen Description	Fusion protein of human GM2A
Target Name	GM2A
Other Names	SAP-3; GM2-AP
Accession No.	Swiss-Prot#: P17900Gene ID: 2760
Uniprot	P17900
GeneID	2760;
Calculated MW	21kd
Concentration	0.7mg/ml
Formulation	Rabbit IgG in pH7.4 PBS, 0.05% NaN ₃ , 40% Glycerol.
Storage	Store at -20°C

Application Details

Western blotting: 1:200-1:1000

Immunohistochemistry: 1:25-1:100

Images



Gel: 12%SDS-PAGE

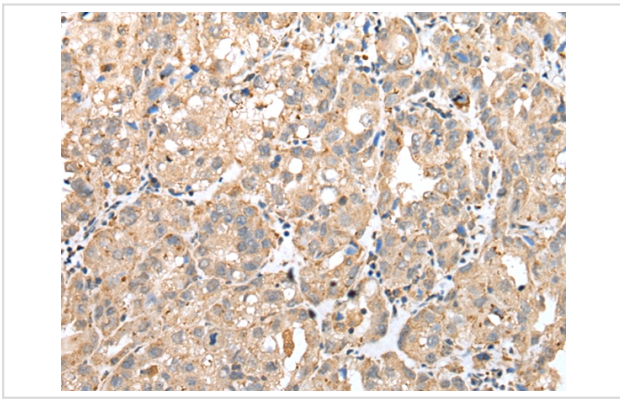
Lysate: 40 µg

Lane: Mouse kidney tissue

Primary antibody: 1/200 dilution

Secondary antibody: Goat anti rabbit IgG at 1/8000 dilution

Exposure time: 2 seconds



Immunohistochemical analysis of paraffin-embedded Human ovarian cancer tissue using #42969 at dilution 1/25,

Background

This gene encodes a small glycolipid transport protein which acts as a substrate specific co-factor for the lysosomal enzyme beta-hexosaminidase A. Beta-hexosaminidase A, together with GM2 ganglioside activator, catalyzes the degradation of the ganglioside GM2, and other molecules containing terminal N-acetyl hexosamines. Mutations in this gene result in GM2-gangliosidosis type AB or the AB variant of Tay-Sachs disease. Alternative splicing results in multiple transcript variants.

Note: This product is for in vitro research use only