

## CSRP3 Antibody

Catalog No: #42970

Orders: [order@signalwayantibody.com](mailto:order@signalwayantibody.com)Support: [tech@signalwayantibody.com](mailto:tech@signalwayantibody.com)

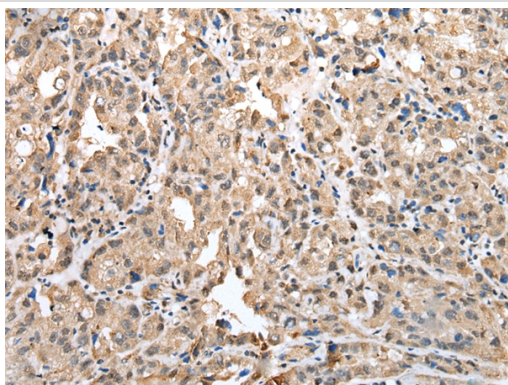
## Description

Product Name	CSRP3 Antibody
Host Species	Rabbit
Clonality	Polyclonal
Purification	Antigen affinity purification.
Applications	IHC
Species Reactivity	Hu
Specificity	The antibody detects endogenous levels of total CSRP3 protein.
Immunogen Type	protein
Immunogen Description	Full length fusion protein of human CSRP3
Target Name	CSRP3
Other Names	CLP; MLP; CRP3; LMO4; CMD1M; CMH12
Accession No.	Swiss-Prot#: P50461 Gene ID: 8048
Uniprot	P50461
GeneID	8048;
Concentration	0.7mg/ml
Formulation	Rabbit IgG in pH7.4 PBS, 0.05% NaN <sub>3</sub> , 40% Glycerol.
Storage	Store at -20°C

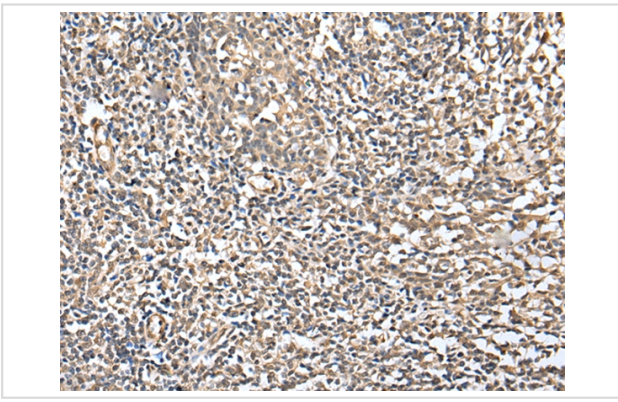
## Application Details

Immunohistochemistry: 1:25-1:100

## Images



Immunohistochemical analysis of paraffin-embedded Human ovarian cancer tissue using #42970 at dilution 1/25.



Immunohistochemical analysis of paraffin-embedded Human tonsil tissue using #42970 at dilution 1/25.

## Background

This gene encodes a member of the CSRP family of LIM domain proteins, which may be involved in regulatory processes important for development and cellular differentiation. The LIM/double zinc-finger motif found in this protein is found in a group of proteins with critical functions in gene regulation, cell growth, and somatic differentiation. Mutations in this gene are thought to cause heritable forms of hypertrophic cardiomyopathy (HCM) and dilated cardiomyopathy (DCM) in humans. Alternatively spliced transcript variants with different 5' UTR, but encoding the same protein, have been found for this gene.

Note: This product is for in vitro research use only