

DENR Antibody

Catalog No: #42971

Orders: order@signalwayantibody.comSupport: tech@signalwayantibody.com

Description

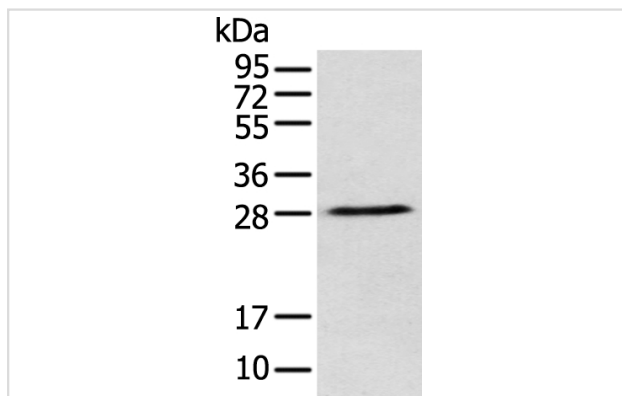
Product Name	DENR Antibody
Host Species	Rabbit
Clonality	Polyclonal
Purification	Antigen affinity purification.
Applications	WB IHC
Species Reactivity	Hu
Specificity	The antibody detects endogenous levels of total DENR protein.
Immunogen Type	protein
Immunogen Description	Fusion protein of human DENR
Target Name	DENR
Other Names	DRP; DRP1; SMAP-3
Accession No.	Swiss-Prot#: O43583Gene ID: 8562
Uniprot	O43583
GeneID	8562;
Calculated MW	22kd
Concentration	0.9mg/ml
Formulation	Rabbit IgG in pH7.4 PBS, 0.05% NaN ₃ , 40% Glycerol.
Storage	Store at -20°C

Application Details

Western blotting: 1:200-1:1000

Immunohistochemistry: 1:25-1:100

Images



Gel: 12%SDS-PAGE

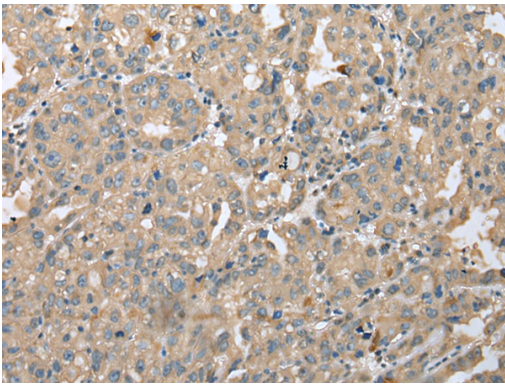
Lysate: 40 µg

Lane: K562 cell

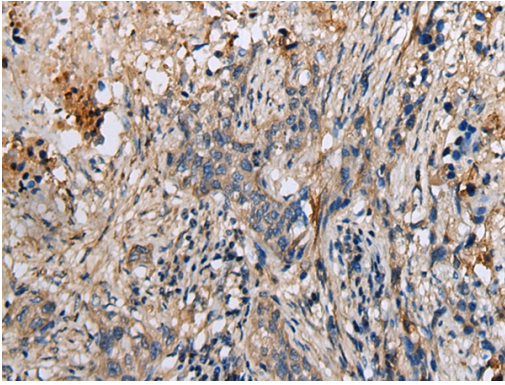
Primary antibody: 1/250 dilution

Secondary antibody: Goat anti rabbit IgG at 1/8000 dilution

Exposure time: 30 seconds



Immunohistochemical analysis of paraffin-embedded Human ovarian cancer tissue using #42971 at dilution 1/25.



Immunohistochemical analysis of paraffin-embedded Human lung cancer tissue using #42971 at dilution 1/25.

Background

This gene encodes a protein whose expression was found to increase in cultured cells at high density but not during growth arrest. This gene was also shown to have increased expression in cells overexpressing HER-2/neu proto-oncogene. The protein contains an SUI1 domain. In budding yeast, SUI1 is a translation initiation factor that along with eIF-2 and the initiator tRNA-Met, directs the ribosome to the proper translation start site. Proteins similar to SUI have been found in mammals, insects, and plants.

Note: This product is for in vitro research use only