

LYPD4 Antibody

Catalog No: #42972

Orders: order@signalwayantibody.com

Support: tech@signalwayantibody.com

Description

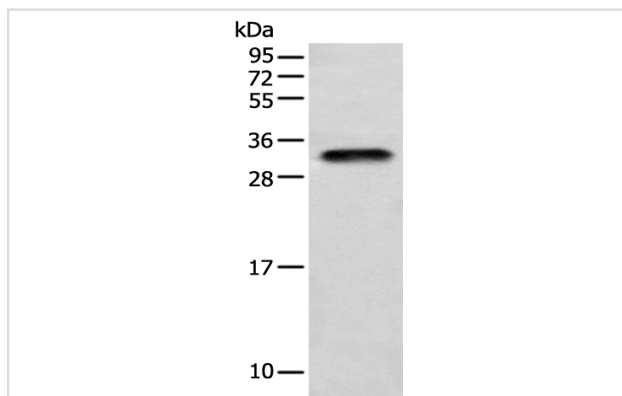
Product Name	LYPD4 Antibody
Host Species	Rabbit
Clonality	Polyclonal
Purification	Antigen affinity purification.
Applications	WB IHC
Species Reactivity	Hu
Specificity	The antibody detects endogenous levels of total LYPD4 protein.
Immunogen Type	protein
Immunogen Description	Full length fusion protein of human LYPD4
Target Name	LYPD4
Other Names	SMR
Accession No.	Swiss-Prot#: Q6UWN0 Gene ID: 147719
Uniprot	Q6UWN0
GeneID	147719;
Calculated MW	27kd
Concentration	1mg/ml
Formulation	Rabbit IgG in pH7.4 PBS, 0.05% NaN ₃ , 40% Glycerol.
Storage	Store at -20°C

Application Details

Western blotting: 1:500-1:2000

Immunohistochemistry: 1:25-1:100

Images



Gel: 12% SDS-PAGE

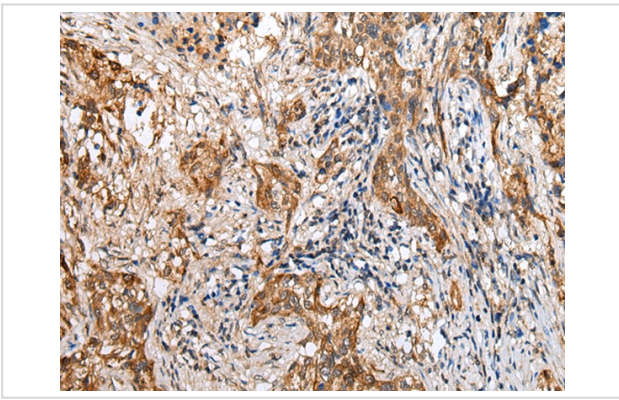
Lysate: 40 µg

Lane: Human testis tissue

Primary antibody: 1/400 dilution

Secondary antibody: Goat anti rabbit IgG at 1/8000 dilution

Exposure time: 1 minute



Immunohistochemical analysis of paraffin-embedded Human lung cancer tissue using #42972 at dilution 1/25,

Background

The specific function of LYPD4 is not yet known.

Note: This product is for in vitro research use only