

SETD3 Antibody

Catalog No: #42974

Orders: order@signalwayantibody.comSupport: tech@signalwayantibody.com

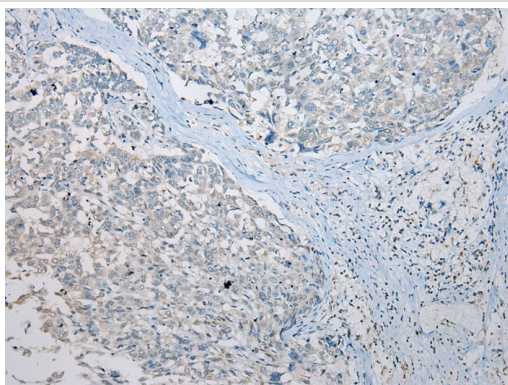
Description

Product Name	SETD3 Antibody
Host Species	Rabbit
Clonality	Polyclonal
Purification	Antigen affinity purification.
Applications	IHC
Species Reactivity	Hu
Specificity	The antibody detects endogenous levels of total SETD3 protein.
Immunogen Type	protein
Immunogen Description	Fusion protein of human SETD3
Target Name	SETD3
Other Names	C14orf154
Accession No.	Swiss-Prot#: Q86TU7Gene ID: 84193
Uniprot	Q86TU7
GeneID	84193;
Concentration	0.8mg/ml
Formulation	Rabbit IgG in pH7.4 PBS, 0.05% NaN ₃ , 40% Glycerol.
Storage	Store at -20°C

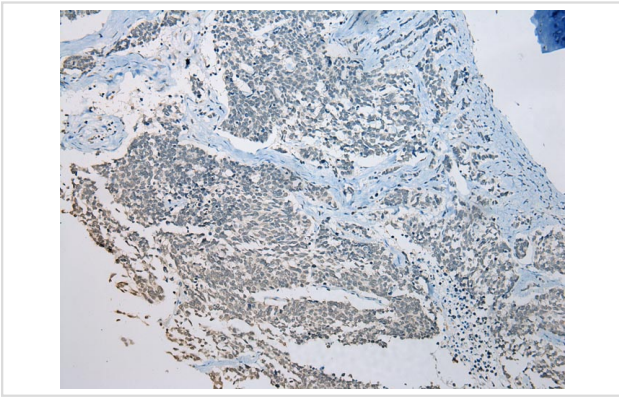
Application Details

Immunohistochemistry: 1:100-1:200

Images



Immunohistochemical analysis of paraffin-embedded Human Liver cancer tissue using #42974 at dilution 1/200.



Immunohistochemical analysis of paraffin-embedded Human Lung cancer tissue using #42974 at dilution 1/200.

Background

Histone methyltransferase that methylates 'Lys-4' and 'Lys-36' of histone H3 (H3K4me and H3K36me). Acts as a transcriptional activator. Plays an important role in the transcriptional regulation of muscle cell differentiation via interaction with MYOD1.

Note: This product is for in vitro research use only