

RAB11A Antibody

Catalog No: #42976

Orders: order@signalwayantibody.comSupport: tech@signalwayantibody.com

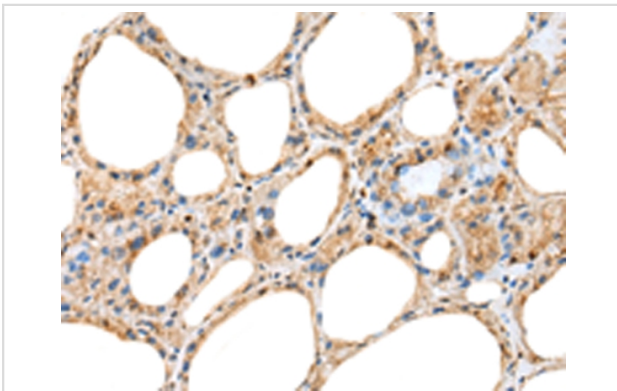
Description

Product Name	RAB11A Antibody
Host Species	Rabbit
Clonality	Polyclonal
Purification	Antigen affinity purification.
Applications	IHC
Species Reactivity	Hu Ms Rt
Specificity	The antibody detects endogenous levels of total RAB11A protein.
Immunogen Type	protein
Immunogen Description	Full length fusion protein of human RAB11A
Target Name	RAB11A
Other Names	YL8
Accession No.	Swiss-Prot#: P62491 Gene ID: 8766
Uniprot	P62491
GeneID	8766;
Concentration	2.1mg/ml
Formulation	Rabbit IgG in pH7.4 PBS, 0.05% NaN ₃ , 40% Glycerol.
Storage	Store at -20°C

Application Details

Immunohistochemistry: 1:25-1:100

Images



Immunohistochemical analysis of paraffin-embedded Human thyroid cancer tissue using #42976 at dilution 1/45,

Background

The protein encoded by this gene belongs to the Rab family of the small GTPase superfamily. It is associated with both constitutive and regulated secretory pathways, and may be involved in protein transport. Two transcript variants encoding different isoforms have been found for this gene.?

Note: This product is for in vitro research use only