

GINS4 Antibody

Catalog No: #42985

Orders: order@signalwayantibody.comSupport: tech@signalwayantibody.com

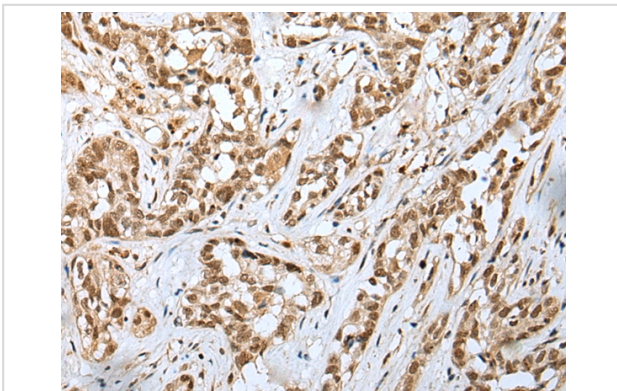
Description

Product Name	GINS4 Antibody
Host Species	Rabbit
Clonality	Polyclonal
Purification	Antigen affinity purification.
Applications	IHC
Species Reactivity	Hu
Specificity	The antibody detects endogenous levels of total GINS4 protein.
Immunogen Type	protein
Immunogen Description	Full length fusion protein of human GINS4
Target Name	GINS4
Other Names	SLD5
Accession No.	Swiss-Prot#: Q9BRT9 Gene ID: 84296
Uniprot	Q9BRT9
GeneID	84296;
Concentration	1mg/ml
Formulation	Rabbit IgG in pH7.4 PBS, 0.05% NaN ₃ , 40% Glycerol.
Storage	Store at -20°C

Application Details

Immunohistochemistry: 1:25-1:100

Images



Immunohistochemical analysis of paraffin-embedded Human ovarian cancer tissue using #42985 at dilution 1/25,

Background

The yeast heterotetrameric GINS complex is made up of Sld5, Psf1 (GINS1; MIM 610608), Psf2 (GINS2; MIM 610609), and Psf3 (GINS3; MIM 610610). The formation of the GINS complex is essential for the initiation of DNA replication in yeast and *Xenopus* egg extracts (Ueno et al., 2005 [PubMed 16287864]). See GINS1 for additional information about the GINS complex.

Note: This product is for in vitro research use only