

EBI3 Antibody

Catalog No: #42991

Orders: order@signalwayantibody.comSupport: tech@signalwayantibody.com

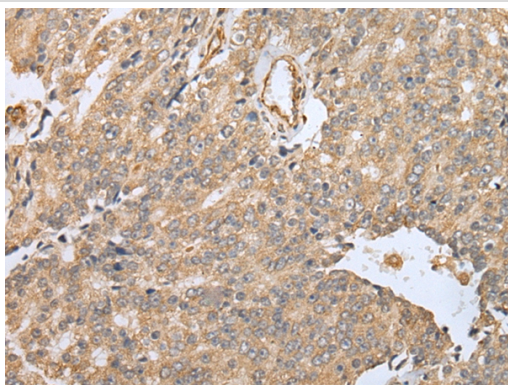
Description

| | |
|-----------------------|---|
| Product Name | EBI3 Antibody |
| Host Species | Rabbit |
| Clonality | Polyclonal |
| Purification | Antigen affinity purification. |
| Applications | IHC |
| Species Reactivity | Hu |
| Specificity | The antibody detects endogenous levels of total EBI3 protein. |
| Immunogen Type | protein |
| Immunogen Description | Fusion protein of human EBI3 |
| Target Name | EBI3 |
| Other Names | IL27B; IL-27B |
| Accession No. | Swiss-Prot#: Q14213Gene ID: 10148 |
| Uniprot | Q14213 |
| GeneID | 10148; |
| Concentration | 1.1mg/ml |
| Formulation | Rabbit IgG in pH7.4 PBS, 0.05% NaN ₃ , 40% Glycerol. |
| Storage | Store at -20°C |

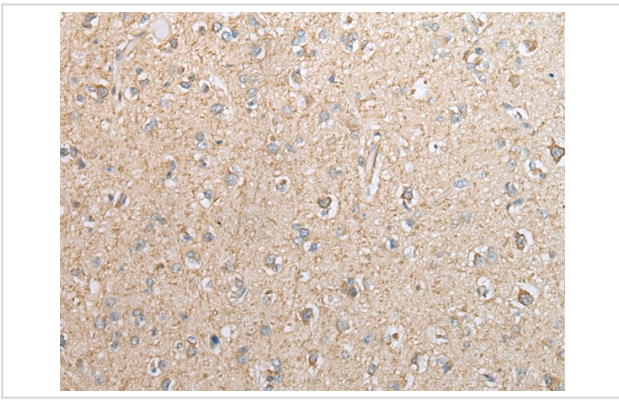
Application Details

Immunohistochemistry: 1:25-1:100

Images



Immunohistochemical analysis of paraffin-embedded Human prostate cancer tissue using #42991 at dilution 1/25.



Immunohistochemical analysis of paraffin-embedded Human brain tissue using #42991 at dilution 1/25.

Background

This gene was identified by its induced expression in B lymphocytes in response Epstein-Barr virus infection. It encodes a secreted glycoprotein belonging to the hematopoietin receptor family, and heterodimerizes with a 28 kDa protein to form interleukin 27 (IL-27). IL-27 regulates T cell and inflammatory responses, in part by activating the Jak/STAT pathway of CD4+ T cells.?

Note: This product is for in vitro research use only