

LYPLA1 Antibody

Catalog No: #42993

Orders: order@signalwayantibody.comSupport: tech@signalwayantibody.com

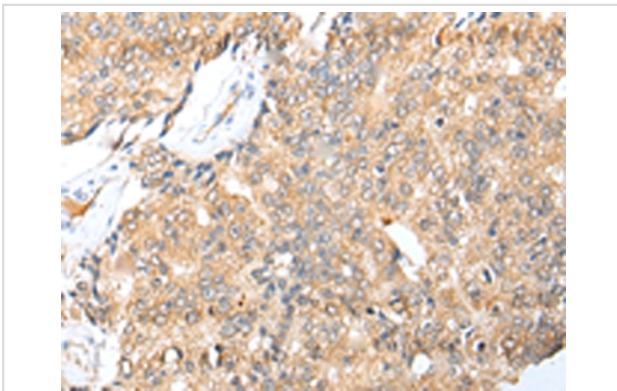
Description

Product Name	LYPLA1 Antibody
Host Species	Rabbit
Clonality	Polyclonal
Purification	Antigen affinity purification.
Applications	IHC
Species Reactivity	Hu
Specificity	The antibody detects endogenous levels of total LYPLA1 protein.
Immunogen Type	protein
Immunogen Description	Full length fusion protein of human LYPLA1
Target Name	LYPLA1
Other Names	APT1; LPL1; APT-1; LPL-I; hAPT1
Accession No.	Swiss-Prot#: O75608 Gene ID: 10434
Uniprot	O75608
GeneID	10434;
Concentration	0.9mg/ml
Formulation	Rabbit IgG in pH7.4 PBS, 0.05% NaN ₃ , 40% Glycerol.
Storage	Store at -20°C

Application Details

Immunohistochemistry: 1:25-1:100

Images



Immunohistochemical analysis of paraffin-embedded Human prostate cancer tissue using #42993 at dilution 1/25,

Background

This gene encodes a member of the alpha/beta hydrolase superfamily. The encoded protein functions as a homodimer, exhibiting both depalmitoylating as well as lysophospholipase activity, and may be involved in Ras localization and signaling. Alternate splicing results in multiple transcript variants. Pseudogenes of this gene have been defined on chromosomes 4, 6, and 7.

Note: This product is for in vitro research use only