

## NAA60 Antibody

Catalog No: #42996

Orders: [order@signalwayantibody.com](mailto:order@signalwayantibody.com)Support: [tech@signalwayantibody.com](mailto:tech@signalwayantibody.com)

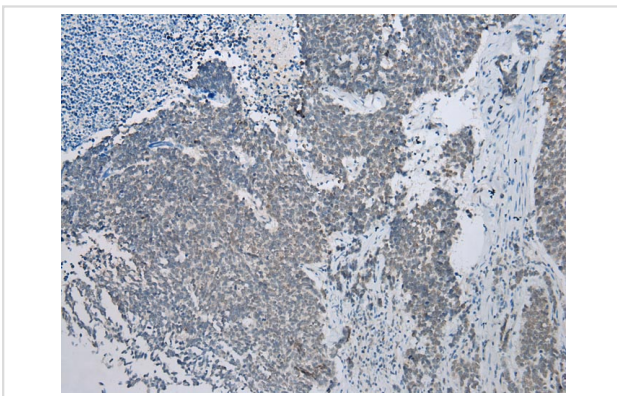
## Description

Product Name	NAA60 Antibody
Host Species	Rabbit
Clonality	Polyclonal
Purification	Antigen affinity purification.
Applications	IHC
Species Reactivity	Hu
Specificity	The antibody detects endogenous levels of total NAA60 protein.
Immunogen Description	Full length fusion protein of human NAA60
Target Name	NAA60
Other Names	HAT4; NAT15
Accession No.	Swiss-Prot#: Q9H7X0Gene ID: 79903
Uniprot	Q9H7X0
GeneID	79903;
Concentration	1.2mg/ml
Formulation	Rabbit IgG in pH7.4 PBS, 0.05% NaN <sub>3</sub> , 40% Glycerol.
Storage	Store at -20°C

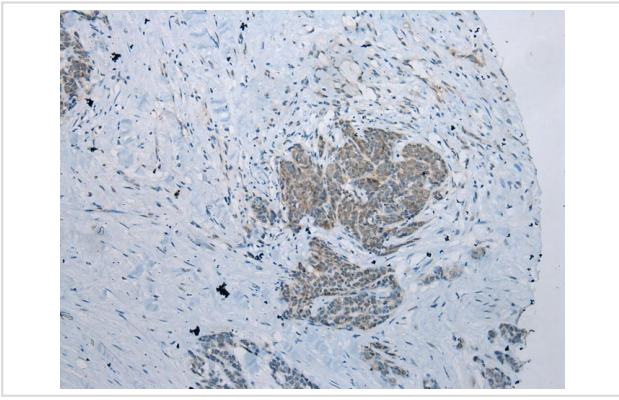
## Application Details

Immunohistochemistry: 1:100-1:200

## Images



Immunohistochemical analysis of paraffin-embedded Human Lung cancer tissue using #42996 at dilution 1/200.



Immunohistochemical analysis of paraffin-embedded Human Thyroid cancer tissue using #42996 at dilution 1/200.

## Background

Histone acetyltransferase localized in the Golgi apparatus that mediates acetylation of free histone H4, thereby facilitating nucleosome assembly. Has a preference for free histone H4 'Lys-20'(H4K20ac), 'Lys-79'(H4K79ac) and 'Lys-91' (H4K91ac). Also displays alpha (N-terminal) acetyltransferase activity towards a range of N-terminal sequences including those starting with Met-Lys, Met-Val, Met-Ala and Met-Met. Required for normal chromosomal segregation during anaphase.

Note: This product is for in vitro research use only