

## NSMCE2 Antibody

Catalog No: #43000

Orders: [order@signalwayantibody.com](mailto:order@signalwayantibody.com)Support: [tech@signalwayantibody.com](mailto:tech@signalwayantibody.com)

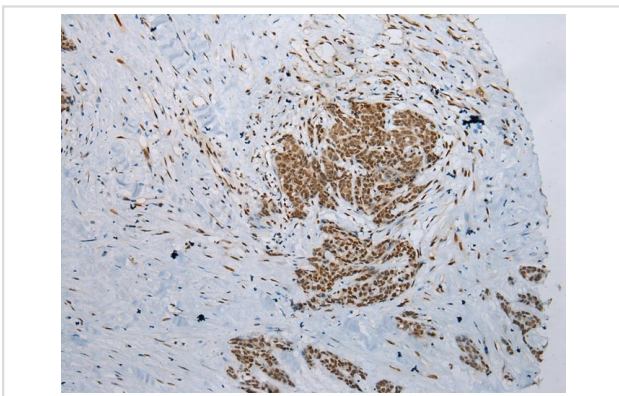
## Description

Product Name	NSMCE2 Antibody
Host Species	Rabbit
Clonality	Polyclonal
Purification	Antigen affinity purification.
Applications	IHC
Species Reactivity	Hu
Specificity	The antibody detects endogenous levels of total NSMCE2 protein.
Immunogen Description	Full length fusion protein of human NSMCE2
Target Name	NSMCE2
Other Names	NSE2; MMS21; ZMIZ7; C8orf36
Accession No.	Swiss-Prot#: Q96MF7 Gene ID: 286053
Uniprot	Q96MF7
GeneID	286053;
Concentration	1.7mg/ml
Formulation	Rabbit IgG in pH7.4 PBS, 0.05% NaN <sub>3</sub> , 40% Glycerol.
Storage	Store at -20°C

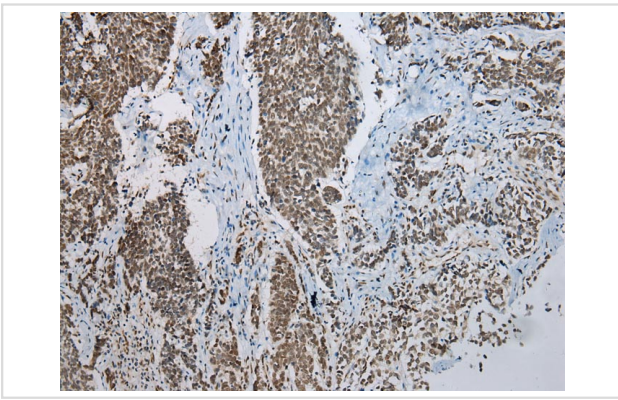
## Application Details

Immunohistochemistry: 1:100-1:200

## Images



Immunohistochemical analysis of paraffin-embedded Human Esophagus cancer tissue using #43000 at dilution 1/200.



Immunohistochemical analysis of paraffin-embedded Human Lung tissue using #43000 at dilution 1/200.

## Background

NSMCE2 is the E3 SUMO-protein ligase component of the SMC5-SMC6 complex, a complex involved in DNA double-strand breaks by homologous recombination. The complex may promote sister chromatid homologous recombination by recruiting the SMC1-SMC3 cohesin complex to double-strand breaks. NSMCE2 acts as a E3 ligase mediating SUMO attachment to various proteins such as SMC6L1 and TRAX, and maybe the cohesin components RAD21 and STAG2. SUMO protein-ligase activity is required for the prevention of DNA damage-induced apoptosis by facilitating DNA repair.

Note: This product is for in vitro research use only