

Description

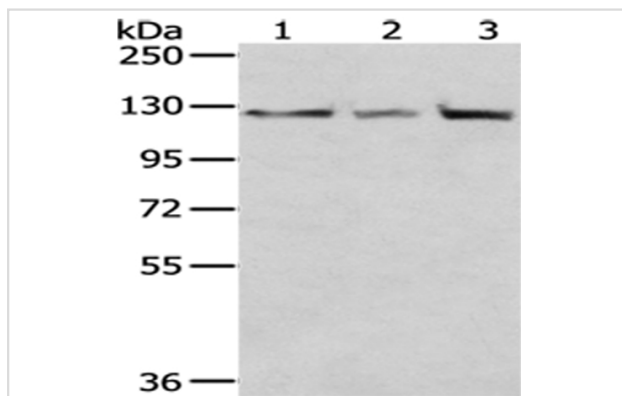
Product Name	IPO5 Antibody
Host Species	Rabbit
Clonality	Polyclonal
Purification	Antigen affinity purification.
Applications	WB
Species Reactivity	Hu
Specificity	The antibody detects endogenous levels of total IPO5 protein.
Immunogen Type	protein
Immunogen Description	Fusion protein of human IPO5
Target Name	IPO5
Other Names	IMB3; Pse1; imp5; KPNB3; RANBP5
Accession No.	Swiss-Prot#: O00410Gene ID: 3843
Uniprot	O00410
GeneID	3843;
Calculated MW	124kd
Concentration	1mg/ml
Formulation	Rabbit IgG in pH7.4 PBS, 0.05% NaN ₃ , 40% Glycerol.
Storage	Store at -20°C

Application Details

Western blotting: 1:500-1:2000

Immunohistochemistry: 1:25-1:100

Images



Gel: 6%SDS-PAGE

Lysate: 40 µg

Lane 1-3: HeLa, 293T and hepg2 cell

Primary antibody: 1/400 dilution

Secondary antibody: Goat anti rabbit IgG at 1/8000 dilution

Exposure time: 5 seconds

Background

Nucleocytoplasmic transport, a signal- and energy-dependent process, takes place through nuclear pore complexes embedded in the nuclear

envelope. The import of proteins containing a nuclear localization signal (NLS) requires the NLS import receptor, a heterodimer of importin alpha and beta subunits also known as karyopherins. Importin alpha binds the NLS-containing cargo in the cytoplasm and importin beta docks the complex at the cytoplasmic side of the nuclear pore complex.

Note: This product is for in vitro research use only