

TOR1A Antibody

Catalog No: #43017

Orders: order@signalwayantibody.comSupport: tech@signalwayantibody.com

Description

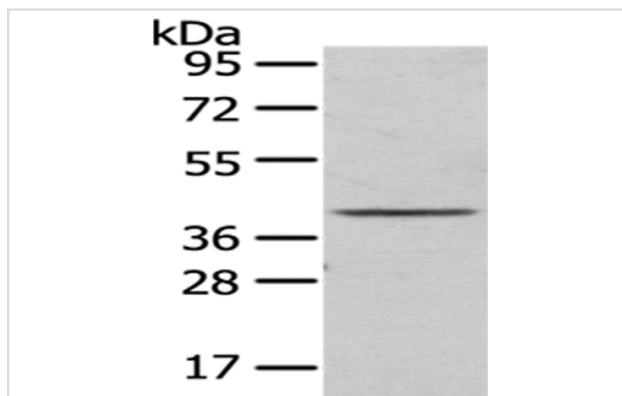
Product Name	TOR1A Antibody
Host Species	Rabbit
Clonality	Polyclonal
Purification	Antigen affinity purification.
Applications	WB IHC
Species Reactivity	Hu
Specificity	The antibody detects endogenous levels of total TOR1A protein.
Immunogen Type	protein
Immunogen Description	Fusion protein of human TOR1A
Target Name	TOR1A
Other Names	DQ2; DYT1
Accession No.	Swiss-Prot#: O14656Gene ID: 1861
Uniprot	O14656
GeneID	1861;
Calculated MW	38kd
Concentration	1mg/ml
Formulation	Rabbit IgG in pH7.4 PBS, 0.05% NaN ₃ , 40% Glycerol.
Storage	Store at -20°C

Application Details

Western blotting: 1:500-1:2000

Immunohistochemistry: 1:25-1:100

Images



Gel: 8%SDS-PAGE

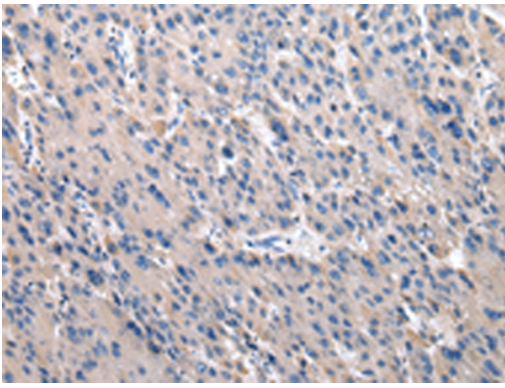
Lysate: 40 µg

Lane: MCF7 cell

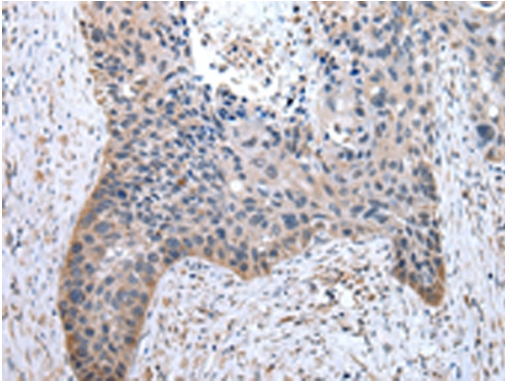
Primary antibody: 1/400 dilution

Secondary antibody: Goat anti rabbit IgG at 1/8000 dilution

Exposure time: 30 seconds



Immunohistochemical analysis of paraffin-embedded Human liver cancer tissue using #43017 at dilution 1/20.



Immunohistochemical analysis of paraffin-embedded Human esophagus cancer tissue using #43017 at dilution 1/20.

Background

The protein encoded by this gene is a member of the AAA family of adenosine triphosphatases (ATPases), is related to the Clp protease/heat shock family and is expressed prominently in the substantia nigra pars compacta. Mutations in this gene result in the autosomal dominant disorder, torsion dystonia 1.

Note: This product is for in vitro research use only