

WASL Antibody

Catalog No: #43021

Orders: order@signalwayantibody.com

Support: tech@signalwayantibody.com

Description

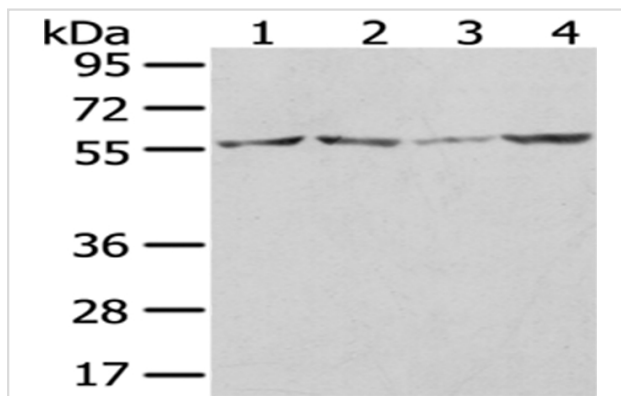
| | |
|-----------------------|---|
| Product Name | WASL Antibody |
| Host Species | Rabbit |
| Clonality | Polyclonal |
| Purification | Antigen affinity purification. |
| Applications | WB IHC |
| Species Reactivity | Hu |
| Specificity | The antibody detects endogenous levels of total WASL protein. |
| Immunogen Type | protein |
| Immunogen Description | Fusion protein of human WASL |
| Target Name | WASL |
| Other Names | NWASP; N-WASP |
| Accession No. | Swiss-Prot#: O00401 Gene ID: 8976 |
| Uniprot | O00401 |
| GeneID | 8976; |
| Calculated MW | 55kd |
| Concentration | 1mg/ml |
| Formulation | Rabbit IgG in pH7.4 PBS, 0.05% NaN ₃ , 40% Glycerol. |
| Storage | Store at -20°C |

Application Details

Western blotting: 1:500-1:2000

Immunohistochemistry: 1:25-1:100

Images



Gel: 8%SDS-PAGE

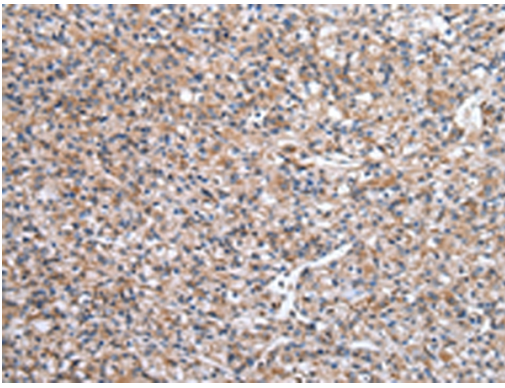
Lysate: 40 µg

Lane 1-4: K562, hela, A172 and 231 cell

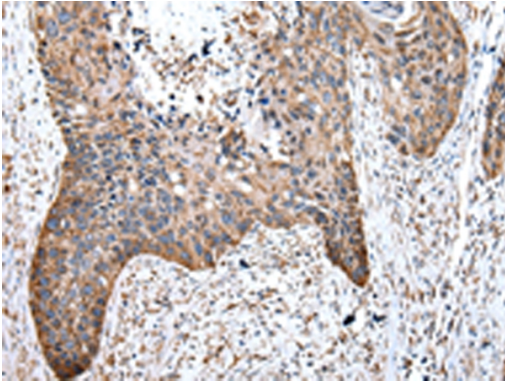
Primary antibody: 1/400 dilution

Secondary antibody: Goat anti rabbit IgG at 1/8000 dilution

Exposure time: 5 seconds



Immunohistochemical analysis of paraffin-embedded Human prostate cancer tissue using #43021 at dilution 1/20.



Immunohistochemical analysis of paraffin-embedded Human esophagus cancer tissue using #43021 at dilution 1/20.

Background

This gene encodes a member of the Wiskott-Aldrich syndrome (WAS) protein family. Wiskott-Aldrich syndrome proteins share similar domain structure, and associate with a variety of signaling molecules to alter the actin cytoskeleton. The encoded protein is highly expressed in neural tissues, and interacts with several proteins involved in cytoskeletal organization, including cell division control protein 42 (CDC42) and the actin-related protein-2/3 (ARP2/3) complex. The encoded protein may be involved in the formation of long actin microspikes, and in neurite extension.

Note: This product is for in vitro research use only