

## GCLM Antibody

Catalog No: #43024

Orders: order@signalwayantibody.com

Support: tech@signalwayantibody.com

## Description

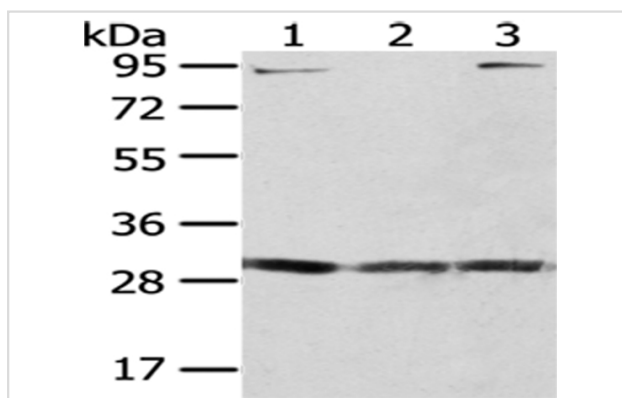
Product Name	GCLM Antibody
Host Species	Rabbit
Clonality	Polyclonal
Purification	Antigen affinity purification.
Applications	WB IHC
Species Reactivity	Hu
Specificity	The antibody detects endogenous levels of total GCLM protein.
Immunogen Type	protein
Immunogen Description	Fusion protein of human GCLM
Target Name	GCLM
Other Names	GLCLR
Accession No.	Swiss-Prot#: P48507 Gene ID: 2730
Uniprot	P48507
GeneID	2730;
Calculated MW	31kd
Concentration	1mg/ml
Formulation	Rabbit IgG in pH7.4 PBS, 0.05% NaN <sub>3</sub> , 40% Glycerol.
Storage	Store at -20°C

## Application Details

Western blotting: 1:500-1:2000

Immunohistochemistry: 1:25-1:100

## Images



Gel: 8%SDS-PAGE

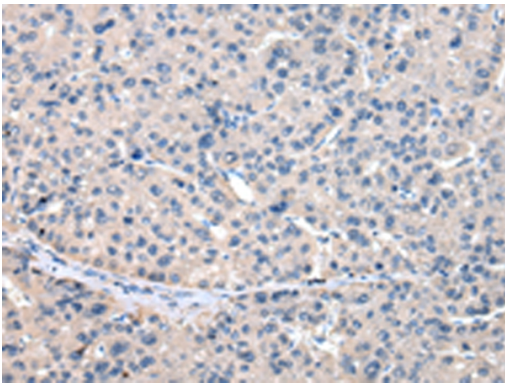
Lysate: 40 µg

Lane 1-3: Lovo, MCF7 and hela cell

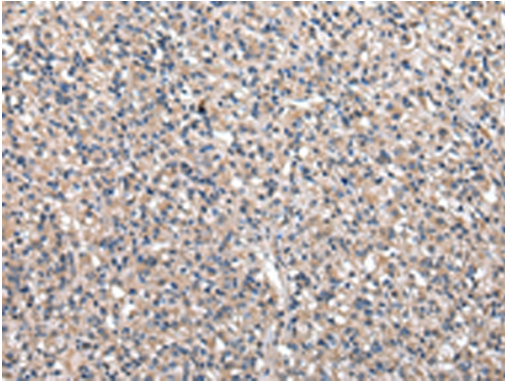
Primary antibody: 1/400 dilution

Secondary antibody: Goat anti rabbit IgG at 1/8000 dilution

Exposure time: 5 seconds



Immunohistochemical analysis of paraffin-embedded Human liver cancer tissue using #43024 at dilution 1/20.



Immunohistochemical analysis of paraffin-embedded Human prostate cancer tissue using #43024 at dilution 1/20.

## Background

Glutamate-cysteine ligase, also known as gamma-glutamylcysteine synthetase, is the first rate limiting enzyme of glutathione synthesis. The enzyme consists of two subunits, a heavy catalytic subunit and a light regulatory subunit. Gamma glutamylcysteine synthetase deficiency has been implicated in some forms of hemolytic anemia.?

Note: This product is for in vitro research use only