

## C1QB Antibody

Catalog No: #43026

Orders: [order@signalwayantibody.com](mailto:order@signalwayantibody.com)Support: [tech@signalwayantibody.com](mailto:tech@signalwayantibody.com)

## Description

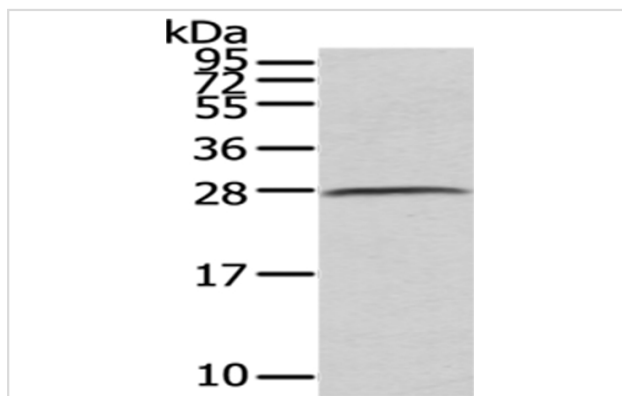
Product Name	C1QB Antibody
Host Species	Rabbit
Clonality	Polyclonal
Purification	Antigen affinity purification.
Applications	WB IHC
Species Reactivity	Hu Ms
Specificity	The antibody detects endogenous levels of total C1QB protein.
Immunogen Type	protein
Immunogen Description	Fusion protein of human C1QB
Target Name	C1QB
Other Names	Complement C1q subcomponent subunit B; complement component C1q, B chain; complement subcomponent C1q chain B
Accession No.	Swiss-Prot#: P02746Gene ID: 713
Uniprot	P02746
GeneID	713;
Calculated MW	27kd
Concentration	1mg/ml
Formulation	Rabbit IgG in pH7.4 PBS, 0.05% NaN <sub>3</sub> , 40% Glycerol.
Storage	Store at -20°C

## Application Details

Western blotting: 1:500-1:2000

Immunohistochemistry: 1:25-1:100

## Images



Gel: 12%SDS-PAGE

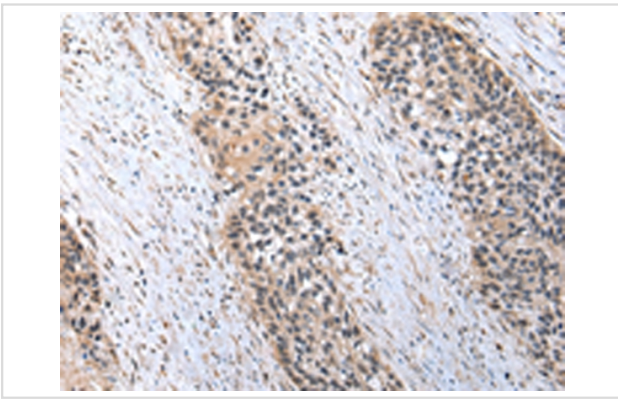
Lysate: 40 µg

Lane: Mouse plasma tissue

Primary antibody: 1/400 dilution

Secondary antibody: Goat anti rabbit IgG at 1/8000 dilution

Exposure time: 1 second



Immunohistochemical analysis of paraffin-embedded Human esophagus cancer tissue using #43026 at dilution 1/20. (Original magnification: B\*Γ• 200)

## Background

This gene encodes a major constituent of the human complement subcomponent C1q. C1q associates with C1r and C1s in order to yield the first component of the serum complement system. Deficiency of C1q has been associated with lupus erythematosus and glomerulonephritis. C1q is composed of 18 polypeptide chains: six A-chains, six B-chains, and six C-chains. Each chain contains a collagen-like region located near the N terminus and a C-terminal globular region.

Note: This product is for in vitro research use only