

## NPC2 Antibody

Catalog No: #43028

Orders: [order@signalwayantibody.com](mailto:order@signalwayantibody.com)Support: [tech@signalwayantibody.com](mailto:tech@signalwayantibody.com)

## Description

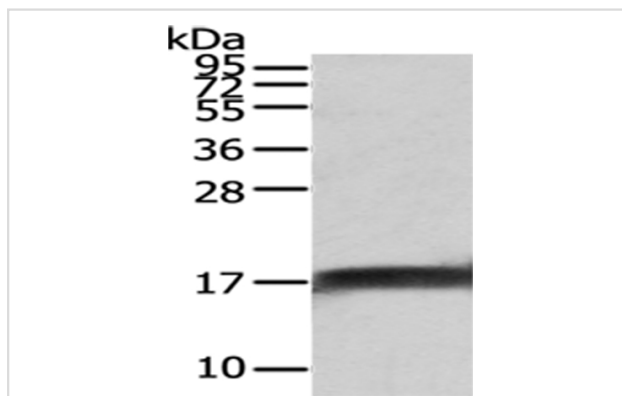
Product Name	NPC2 Antibody
Host Species	Rabbit
Clonality	Polyclonal
Purification	Antigen affinity purification.
Applications	WB IHC
Species Reactivity	Hu Ms
Specificity	The antibody detects endogenous levels of total NPC2 protein.
Immunogen Type	protein
Immunogen Description	Fusion protein of human NPC2
Target Name	NPC2
Other Names	HE1; EDDM1
Accession No.	Swiss-Prot#: P61916Gene ID: 10577
Uniprot	P61916
GeneID	10577;
Calculated MW	17kd
Concentration	1mg/ml
Formulation	Rabbit IgG in pH7.4 PBS, 0.05% NaN <sub>3</sub> , 40% Glycerol.
Storage	Store at -20°C

## Application Details

Western blotting: 1:500-1:2000

Immunohistochemistry: 1:20-1:100

## Images



Gel: 12%SDS-PAGE

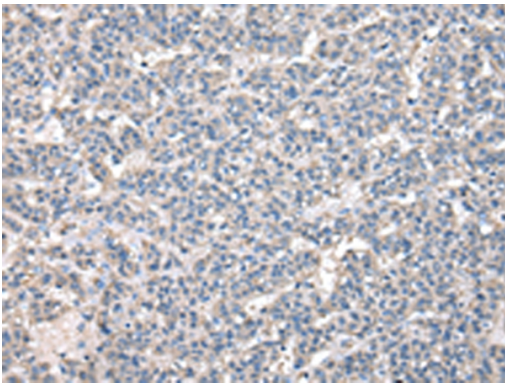
Lysate: 40 µg

Lane: NIH/3T3 cell

Primary antibody: 1/400 dilution

Secondary antibody: Goat anti rabbit IgG at 1/8000 dilution

Exposure time: 20 seconds



Immunohistochemical analysis of paraffin-embedded Human liver cancer tissue using #43028 at dilution 1/20.



Immunohistochemical analysis of paraffin-embedded Human prostate cancer tissue using #43028 at dilution 1/20.

## Background

This gene encodes a protein containing a lipid recognition domain. The encoded protein may function in regulating the transport of cholesterol through the late endosomal/lysosomal system. Mutations in this gene have been associated with Niemann-Pick disease, type C2 and frontal lobe atrophy.?

Note: This product is for in vitro research use only