

FZR1 Antibody

Catalog No: #43031

Orders: order@signalwayantibody.com

Support: tech@signalwayantibody.com

Description

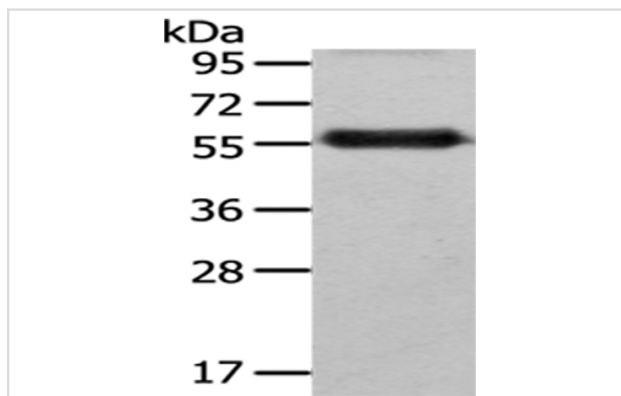
Product Name	FZR1 Antibody
Host Species	Rabbit
Clonality	Polyclonal
Purification	Antigen affinity purification.
Applications	WB IHC
Species Reactivity	Hu
Specificity	The antibody detects endogenous levels of total FZR1 protein.
Immunogen Type	protein
Immunogen Description	Fusion protein of human FZR1
Target Name	FZR1
Other Names	FZR; CDH1; FZR2; HCDH; HCDH1; CDC20C
Accession No.	Swiss-Prot#: Q9UM11 Gene ID: 51343
Uniprot	Q9UM11
GeneID	51343;
Calculated MW	55kd
Concentration	1mg/ml
Formulation	Rabbit IgG in pH7.4 PBS, 0.05% NaN ₃ , 40% Glycerol.
Storage	Store at -20°C

Application Details

Western blotting: 1:500-1:2000

Immunohistochemistry: 1:25-1:100

Images



Gel: 8%SDS-PAGE

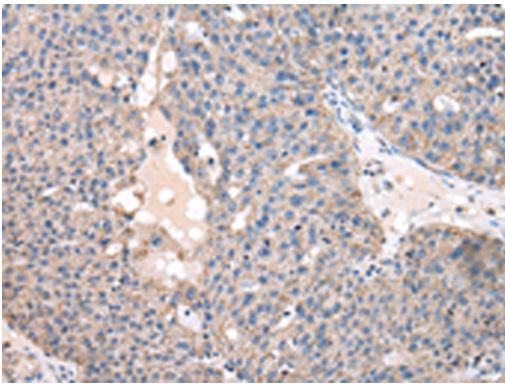
Lysate: 40 µg

Lane: Human placenta tissue

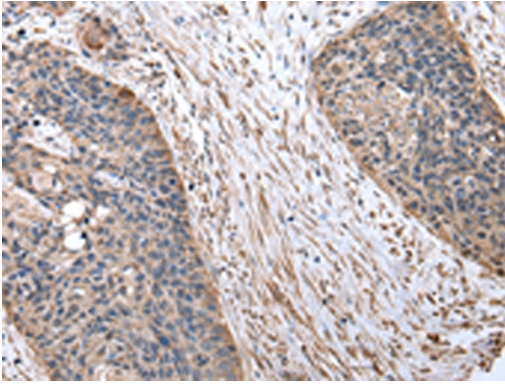
Primary antibody: 1/400 dilution

Secondary antibody: Goat anti rabbit IgG at 1/8000 dilution

Exposure time: 3 minutes



Immunohistochemical analysis of paraffin-embedded Human breast cancer tissue using #43031 at dilution 1/20.



Immunohistochemical analysis of paraffin-embedded Human esophagus cancer tissue using #43031 at dilution 1/20.

Background

Key regulator of ligase activity of the anaphase promoting complex/cyclosome (APC/C), which confers substrate specificity upon the complex. Associates with the APC/C in late mitosis, in replacement of CDC20, and activates the APC/C during anaphase and telophase. The APC/C remains active in degrading substrates to ensure that positive regulators of the cell cycle do not accumulate prematurely. At the G1/S transition FZR1 is phosphorylated, leading to its dissociation from the APC/C.

Note: This product is for in vitro research use only