

MASP1 Antibody

Catalog No: #43034

Orders: order@signalwayantibody.com

Support: tech@signalwayantibody.com

Description

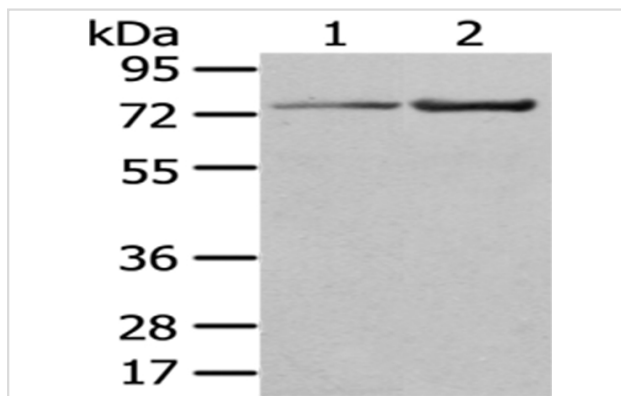
Product Name	MASP1 Antibody
Host Species	Rabbit
Clonality	Polyclonal
Purification	Antigen affinity purification.
Applications	WB IHC
Species Reactivity	Hu Ms
Specificity	The antibody detects endogenous levels of total MASP1 protein.
Immunogen Type	protein
Immunogen Description	Fusion protein of human MASP1
Target Name	MASP1
Other Names	3MC1; MAP1; MASP; RaRF; CRARF; MASP3; MAp44; PRSS5; CRARF1
Accession No.	Swiss-Prot#: P48740 Gene ID: 5648
Uniprot	P48740
GeneID	5648;
Calculated MW	79kd
Concentration	1mg/ml
Formulation	Rabbit IgG in pH7.4 PBS, 0.05% NaN ₃ , 40% Glycerol.
Storage	Store at -20°C

Application Details

Western blotting: 1:200-1:1000

Immunohistochemistry: 1:25-1:100

Images



Gel: 8%SDS-PAGE

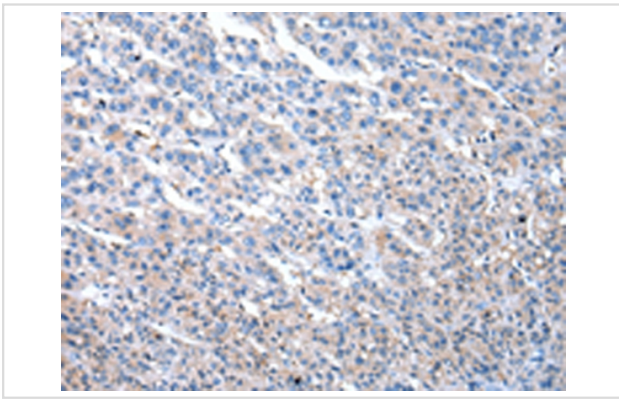
Lysate: 40 µg

Lane 1-2: HeLa cell and mouse liver tissue

Primary antibody: 1/400 dilution

Secondary antibody: Goat anti rabbit IgG at 1/8000 dilution

Exposure time: 3 minutes



Immunohistochemical analysis of paraffin-embedded Human liver cancer tissue using #43034 at dilution 1/20. (Original magnification: B1F• 200)

Background

This gene encodes a serine protease that functions as a component of the lectin pathway of complement activation. The complement pathway plays an essential role in the innate and adaptive immune response. The encoded protein is synthesized as a zymogen and is activated when it complexes with the pathogen recognition molecules of lectin pathway, the mannose-binding lectin and the ficolins. This protein is not directly involved in complement activation but may play a role as an amplifier of complement activation by cleaving complement C2 or by activating another complement serine protease, MASP-2. The encoded protein is also able to cleave fibrinogen and factor XIII and may may be involved in coagulation.

Note: This product is for in vitro research use only