

CD14 Antibody

Catalog No: #43038

Orders: order@signalwayantibody.com

Support: tech@signalwayantibody.com

Description

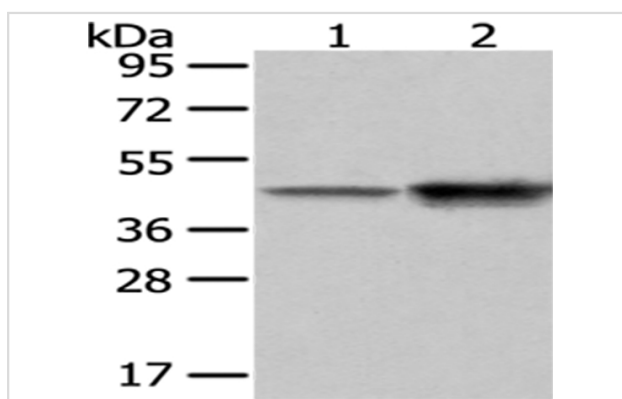
Product Name	CD14 Antibody
Host Species	Rabbit
Clonality	Polyclonal
Purification	Antigen affinity purification.
Applications	WB IHC
Species Reactivity	Hu Ms
Specificity	The antibody detects endogenous levels of total CD14 protein.
Immunogen Type	protein
Immunogen Description	Fusion protein of human CD14
Target Name	CD14
Other Names	CD14 antigen; CD14 molecule; Monocyte differentiation antigen CD14; Monocyte differentiation antigen CD14, membrane-bound form;
Accession No.	Swiss-Prot#: P08571 Gene ID: 929
Uniprot	P08571
GeneID	929;
Calculated MW	40kd
Concentration	1mg/ml
Formulation	Rabbit IgG in pH7.4 PBS, 0.05% NaN ₃ , 40% Glycerol.
Storage	Store at -20°C

Application Details

Western blotting: 1:500-1:2000

Immunohistochemistry: 1:25-1:100

Images



Gel: 8%SDS-PAGE

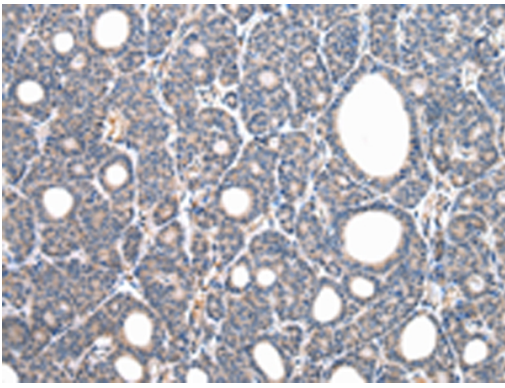
Lysate: 40 µg

Lane 1-2: A549 and NIH/3T3 cell

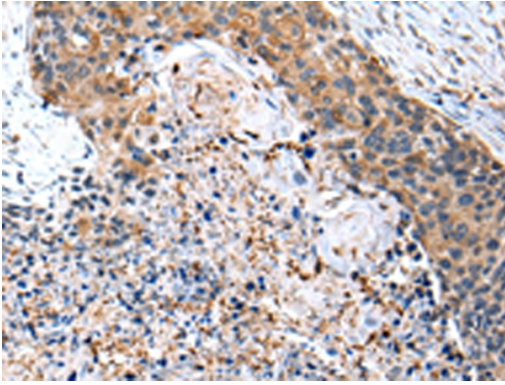
Primary antibody: 1/400 dilution

Secondary antibody: Goat anti rabbit IgG at 1/8000 dilution

Exposure time: 30 seconds



Immunohistochemical analysis of paraffin-embedded Human thyroid cancer tissue using #43038 at dilution 1/20.



Immunohistochemical analysis of paraffin-embedded Human esophagus cancer tissue using #43038 at dilution 1/20.

Background

The protein encoded by this gene is a surface antigen that is preferentially expressed on monocytes/macrophages. It cooperates with other proteins to mediate the innate immune response to bacterial lipopolysaccharide. Alternative splicing results in multiple transcript variants encoding the same protein.?

Note: This product is for in vitro research use only