

BTAF1 Antibody

Catalog No: #43040

Orders: order@signalwayantibody.com

Support: tech@signalwayantibody.com

Description

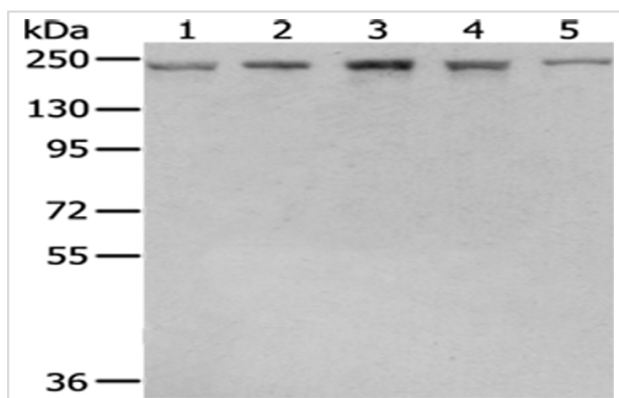
Product Name	BTAF1 Antibody
Host Species	Rabbit
Clonality	Polyclonal
Purification	Antigen affinity purification.
Applications	WB IHC
Species Reactivity	Hu Ms
Specificity	The antibody detects endogenous levels of total BTAF1 protein.
Immunogen Type	protein
Immunogen Description	Fusion protein of human BTAF1
Target Name	BTAF1
Other Names	MOT1; TAF172; TAFII170; TAF(II)170
Accession No.	Swiss-Prot#: O14981Gene ID: 9044
Uniprot	O14981
GeneID	9044;
Calculated MW	207kd
Concentration	1mg/ml
Formulation	Rabbit IgG in pH7.4 PBS, 0.05% NaN ₃ , 40% Glycerol.
Storage	Store at -20°C

Application Details

Western blotting: 1:500-1:2000

Immunohistochemistry: 1:25-1:100

Images



Gel: 6%SDS-PAGE

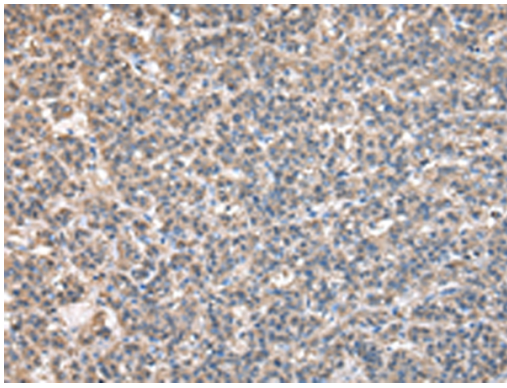
Lysate: 40 µg

Lane 1-5: NIH/3T3, hepg2, hela, 231 and Raji cell

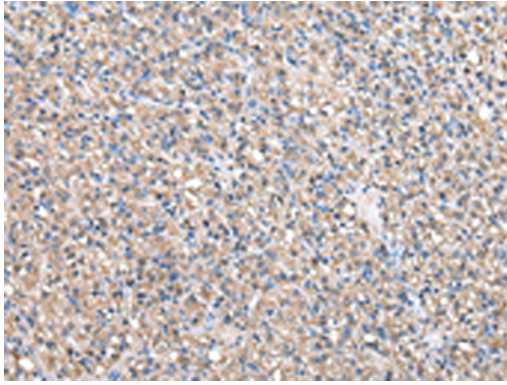
Primary antibody: 1/400 dilution

Secondary antibody: Goat anti rabbit IgG at 1/8000 dilution

Exposure time: 10 seconds



Immunohistochemical analysis of paraffin-embedded Human liver cancer tissue using #43040 at dilution 1/20.



Immunohistochemical analysis of paraffin-embedded Human prostate cancer tissue using #43040 at dilution 1/20.

Background

This gene encodes a TAF (TATA box-binding protein-associated factor), which associates with TBP (TATA box-binding protein) to form the B-TFIID complex that is required for transcription initiation of genes by RNA polymerase II. This TAF has DNA-dependent ATPase activity, which drives the dissociation of TBP from DNA, freeing the TBP to associate with other TATA boxes or TATA-less promoters.

Note: This product is for in vitro research use only