

## SBDS Antibody

Catalog No: #43044

Orders: order@signalwayantibody.com

Support: tech@signalwayantibody.com

## Description

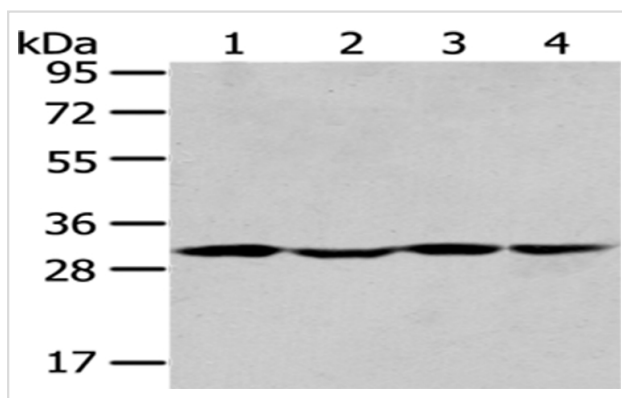
Product Name	SBDS Antibody
Host Species	Rabbit
Clonality	Polyclonal
Purification	Antigen affinity purification.
Applications	WB IHC
Species Reactivity	Hu
Specificity	The antibody detects endogenous levels of total SBDS protein.
Immunogen Type	protein
Immunogen Description	Fusion protein of human SBDS
Target Name	SBDS
Other Names	SDS; SWDS; CGI-97
Accession No.	Swiss-Prot#: Q9Y3A5 Gene ID: 51119
Uniprot	Q9Y3A5
GeneID	51119;
Calculated MW	29kd
Concentration	1mg/ml
Formulation	Rabbit IgG in pH7.4 PBS, 0.05% NaN <sub>3</sub> , 40% Glycerol.
Storage	Store at -20°C

## Application Details

Western blotting: 1:500-1:2000

Immunohistochemistry: 1:25-1:100

## Images



Gel: 8%SDS-PAGE

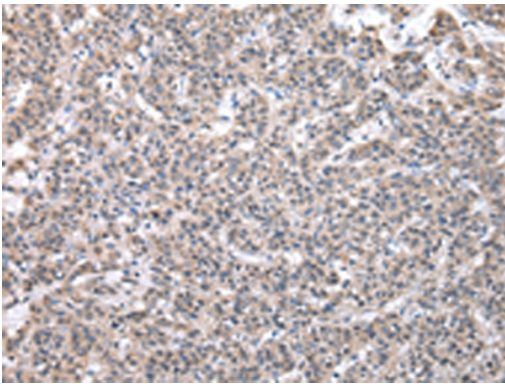
Lysate: 40 µg

Lane 1-4: HeLa, Jurkat, A549 and NIH/3T3 cell

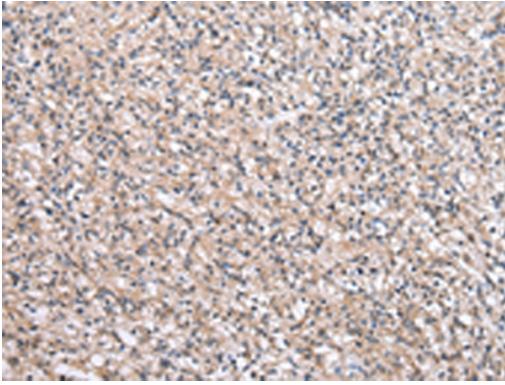
Primary antibody: 1/400 dilution

Secondary antibody: Goat anti rabbit IgG at 1/8000 dilution

Exposure time: 5 seconds



Immunohistochemical analysis of paraffin-embedded Human liver cancer tissue using #43044 at dilution 1/20.



Immunohistochemical analysis of paraffin-embedded Human prostate cancer tissue using #43044 at dilution 1/20.

## Background

This gene encodes a member of a highly conserved protein family that exists from archaea to vertebrates and plants. The encoded protein may function in RNA metabolism. Mutations within this gene are associated with Shwachman-Bodian-Diamond syndrome. An alternative transcript has been described, but its biological nature has not been determined. This gene has a closely linked pseudogene that is distally located.?

Note: This product is for in vitro research use only