

RPS10 Antibody

Catalog No: #43045

Orders: order@signalwayantibody.comSupport: tech@signalwayantibody.com

Description

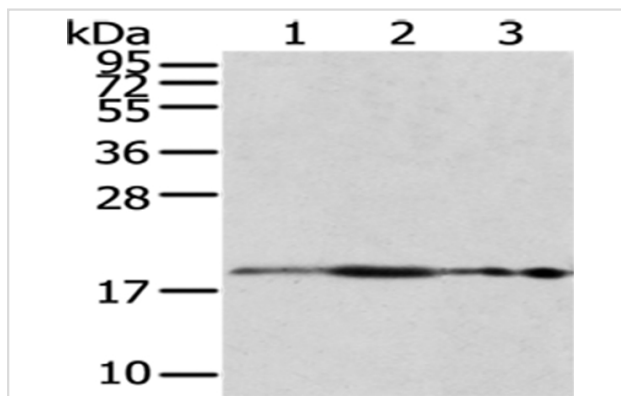
Product Name	RPS10 Antibody
Host Species	Rabbit
Clonality	Polyclonal
Purification	Antigen affinity purification.
Applications	WB IHC
Species Reactivity	Hu
Specificity	The antibody detects endogenous levels of total RPS10 protein.
Immunogen Type	protein
Immunogen Description	Fusion protein of human RPS10
Target Name	RPS10
Other Names	S10; DBA9
Accession No.	Swiss-Prot#: P46783 Gene ID: 6204
Uniprot	P46783
GeneID	6204;
Calculated MW	19kd
Concentration	1mg/ml
Formulation	Rabbit IgG in pH7.4 PBS, 0.05% NaN ₃ , 40% Glycerol.
Storage	Store at -20°C

Application Details

Western blotting: 1:500-1:2000

Immunohistochemistry: 1:10-1:50

Images



Gel: 12%SDS-PAGE

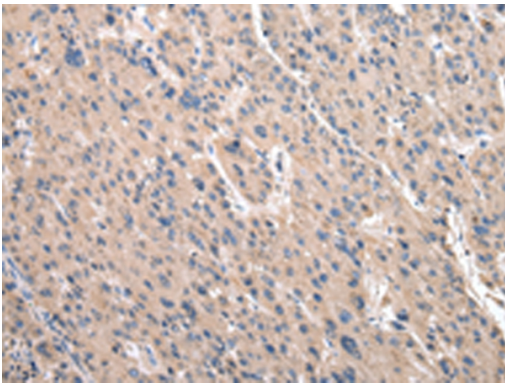
Lysate: 40 µg

Lane 1-3: HeLa, raji and MCF7 cell

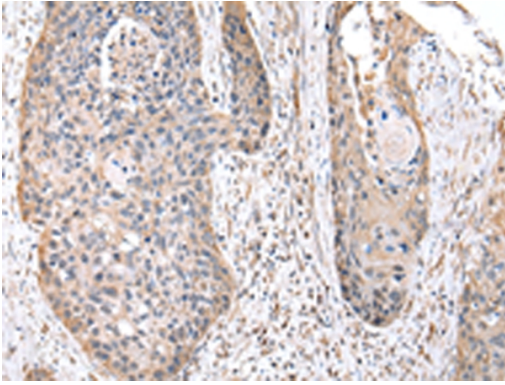
Primary antibody: 1/400 dilution

Secondary antibody: Goat anti rabbit IgG at 1/8000 dilution

Exposure time: 1 minute



Immunohistochemical analysis of paraffin-embedded Human liver cancer tissue using #43045 at dilution 1/20.



Immunohistochemical analysis of paraffin-embedded Human esophagus cancer tissue using #43045 at dilution 1/20.

Background

Ribosomes, the organelles that catalyze protein synthesis, consist of a small 40S subunit and a large 60S subunit. Together these subunits are composed of 4 RNA species and approximately 80 structurally distinct proteins. This gene encodes a ribosomal protein that is a component of the 40S subunit. The protein belongs to the S10E family of ribosomal proteins. It is located in the cytoplasm.?

Note: This product is for in vitro research use only