

ESD Antibody

Catalog No: #43048

Orders: order@signalwayantibody.comSupport: tech@signalwayantibody.com

Description

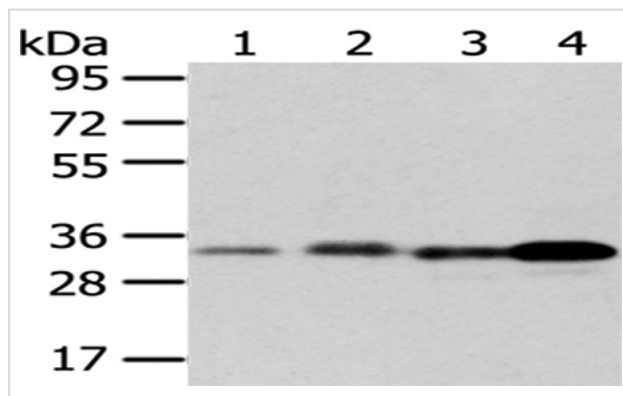
Product Name	ESD Antibody
Host Species	Rabbit
Clonality	Polyclonal
Purification	Antigen affinity purification.
Applications	WB IHC
Species Reactivity	Hu Ms
Specificity	The antibody detects endogenous levels of total ESD protein.
Immunogen Type	protein
Immunogen Description	Fusion protein of human ESD
Target Name	ESD
Other Names	FGH
Accession No.	Swiss-Prot#: P10768Gene ID: 2098
Uniprot	P10768
GeneID	2098;
Calculated MW	31kd
Concentration	1mg/ml
Formulation	Rabbit IgG in pH7.4 PBS, 0.05% NaN ₃ , 40% Glycerol.
Storage	Store at -20°C

Application Details

Western blotting: 1:500-1:2000

Immunohistochemistry: 1:25-1:100

Images



Gel: 8%SDS-PAGE

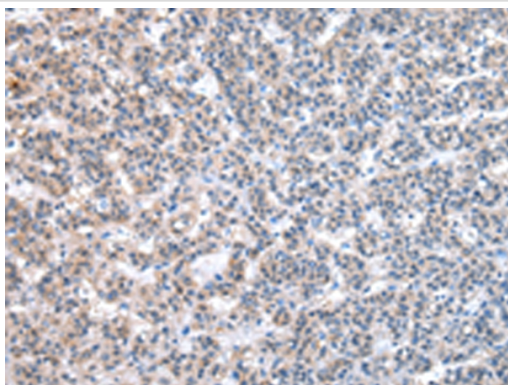
Lysate: 40 µg

Lane 1-4: Raji cell and human fetal brain tissue, mouse liver and kidney tissue

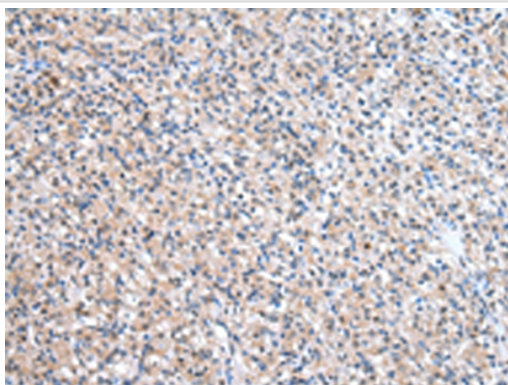
Primary antibody: 1/400 dilution

Secondary antibody: Goat anti rabbit IgG at 1/8000 dilution

Exposure time: 10 seconds



Immunohistochemical analysis of paraffin-embedded Human liver cancer tissue using #43048 at dilution 1/20.



Immunohistochemical analysis of paraffin-embedded Human prostate cancer tissue using #43048 at dilution 1/20.

Background

This gene encodes a serine hydrolase that belongs to the esterase D family. The encoded enzyme is active toward numerous substrates including O-acetylated sialic acids, and it may be involved in the recycling of sialic acids. This gene is used as a genetic marker for retinoblastoma and Wilson's disease.

Note: This product is for in vitro research use only