

M6PR Antibody

Catalog No: #43050

Orders: order@signalwayantibody.comSupport: tech@signalwayantibody.com

Description

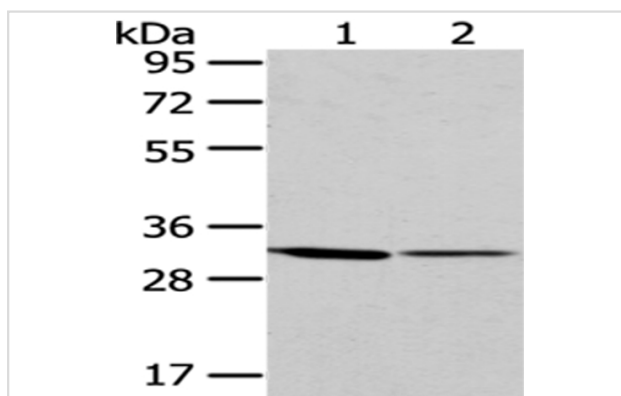
Product Name	M6PR Antibody
Host Species	Rabbit
Clonality	Polyclonal
Purification	Antigen affinity purification.
Applications	WB IHC
Species Reactivity	Hu
Specificity	The antibody detects endogenous levels of total M6PR protein.
Immunogen Type	protein
Immunogen Description	Fusion protein of human M6PR
Target Name	M6PR
Other Names	SMPR; MPR46; CD-MPR; MPR 46; MPR-46
Accession No.	Swiss-Prot#: P20645 Gene ID: 4074
Uniprot	P20645
GeneID	4074;
Calculated MW	31kd
Concentration	1mg/ml
Formulation	Rabbit IgG in pH7.4 PBS, 0.05% NaN ₃ , 40% Glycerol.
Storage	Store at -20°C

Application Details

Western blotting: 1:500-1:2000

Immunohistochemistry: 1:25-1:100

Images



Gel: 8%SDS-PAGE

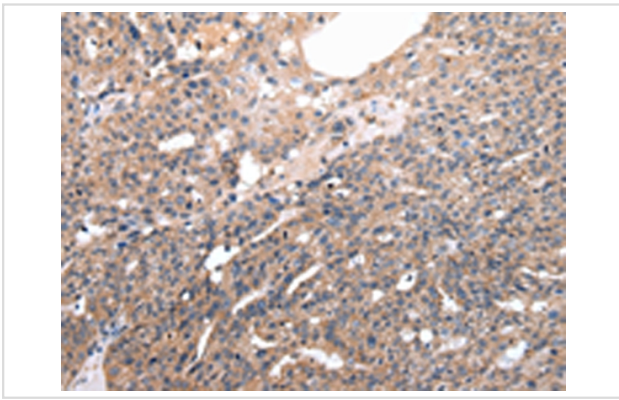
Lysate: 40 µg

Lane 1-2: Hepg2 and lo2 cell

Primary antibody: 1/400 dilution

Secondary antibody: Goat anti rabbit IgG at 1/8000 dilution

Exposure time: 10 seconds



Immunohistochemical analysis of paraffin-embedded Human breast cancer tissue using #43050 at dilution 1/20. (Original magnification: B1F• 200)

Background

This gene encodes a member of the P-type lectin family. P-type lectins play a critical role in lysosome function through the specific transport of mannose-6-phosphate-containing acid hydrolases from the Golgi complex to lysosomes. The encoded protein functions as a homodimer and requires divalent cations for ligand binding. Alternatively spliced transcript variants encoding multiple isoforms have been observed for this gene. A pseudogene of this gene is located on the long arm of chromosome X.?

Note: This product is for in vitro research use only