

## OXA1L Antibody

Catalog No: #43051

Orders: order@signalwayantibody.com

Support: tech@signalwayantibody.com

## Description

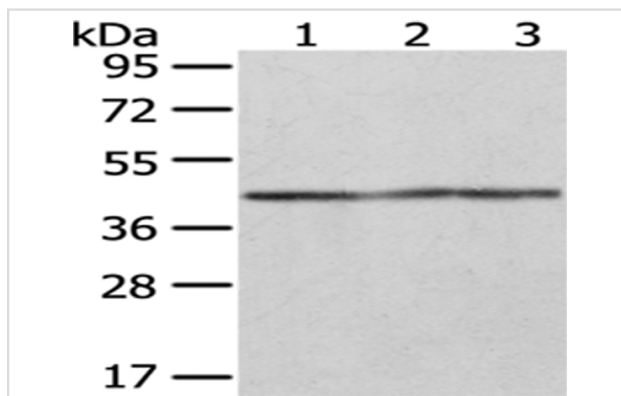
Product Name	OXA1L Antibody
Host Species	Rabbit
Clonality	Polyclonal
Purification	Antigen affinity purification.
Applications	WB IHC
Species Reactivity	Hu
Specificity	The antibody detects endogenous levels of total OXA1L protein.
Immunogen Type	protein
Immunogen Description	Fusion protein of human OXA1L
Target Name	OXA1L
Other Names	OXA1
Accession No.	Swiss-Prot#: Q15070 Gene ID: 5018
Uniprot	Q15070
GeneID	5018;
Calculated MW	49kd
Concentration	1mg/ml
Formulation	Rabbit IgG in pH7.4 PBS, 0.05% NaN <sub>3</sub> , 40% Glycerol.
Storage	Store at -20°C

## Application Details

Western blotting: 1:200-1:1000

Immunohistochemistry: 1:25-1:100

## Images



Gel: 8%SDS-PAGE

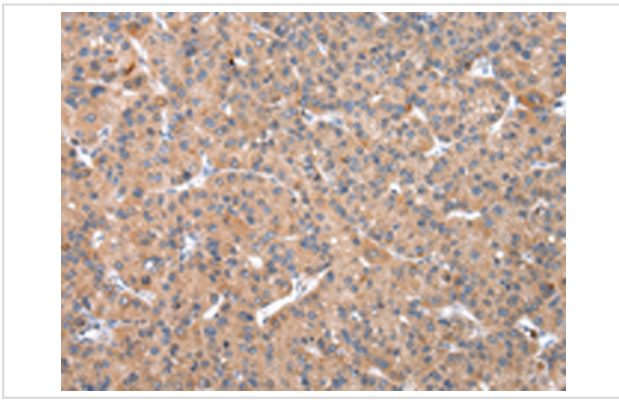
Lysate: 40 µg

Lane 1-3: Hepg2, PC3 and hela cell

Primary antibody: 1/400 dilution

Secondary antibody: Goat anti rabbit IgG at 1/8000 dilution

Exposure time: 20 seconds



Immunohistochemical analysis of paraffin-embedded Human liver cancer tissue using #43051 at dilution 1/20. (Original magnification: B1F• 200)

## Background

Required for the insertion of integral membrane proteins into the mitochondrial inner membrane. Essential for the activity and assembly of cytochrome oxidase. Required for the correct biogenesis of ATP synthase and complex I in mitochondria.

Note: This product is for in vitro research use only