

SSRP1 Antibody

Catalog No: #43058

Orders: order@signalwayantibody.comSupport: tech@signalwayantibody.com

Description

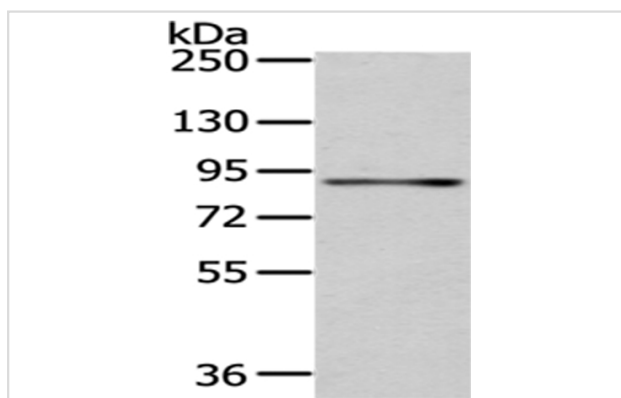
Product Name	SSRP1 Antibody
Host Species	Rabbit
Clonality	Polyclonal
Purification	Antigen affinity purification.
Applications	WB
Species Reactivity	Hu
Specificity	The antibody detects endogenous levels of total SSRP1 protein.
Immunogen Type	protein
Immunogen Description	Fusion protein of human SSRP1
Target Name	SSRP1
Other Names	FACT; T160; FACT80
Accession No.	Swiss-Prot#: Q08945 Gene ID: 6749
Uniprot	Q08945
GeneID	6749;
Calculated MW	81kd
Concentration	1mg/ml
Formulation	Rabbit IgG in pH7.4 PBS, 0.05% NaN ₃ , 40% Glycerol.
Storage	Store at -20°C

Application Details

Western blotting: 1:500-1:2000

Immunohistochemistry: 1:25-1:100

Images



Gel: 6%SDS-PAGE
 Lysate: 40 µg
 Lane: HeLa cell
 Primary antibody: 1/400 dilution
 Secondary antibody: Goat anti rabbit IgG at 1/8000 dilution
 Exposure time: 40 seconds

Background

The protein encoded by this gene is a subunit of a heterodimer that, along with SUPT16H, forms chromatin transcriptional elongation factor FACT.

FACT interacts specifically with histones H2A/H2B to effect nucleosome disassembly and transcription elongation. FACT and cisplatin-damaged DNA may be crucial to the anticancer mechanism of cisplatin. This encoded protein contains a high mobility group box which most likely constitutes the structure recognition element for cisplatin-modified DNA.

Note: This product is for in vitro research use only