

SF1 Antibody

Catalog No: #43060

Orders: order@signalwayantibody.comSupport: tech@signalwayantibody.com

Description

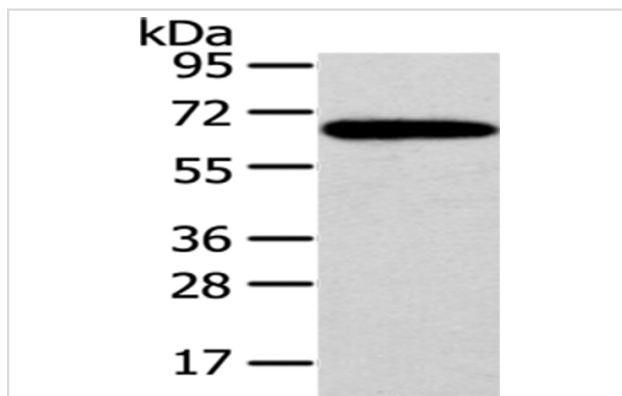
Product Name	SF1 Antibody
Host Species	Rabbit
Clonality	Polyclonal
Purification	Antigen affinity purification.
Applications	WB IHC
Species Reactivity	Hu
Specificity	The antibody detects endogenous levels of total SF1 protein.
Immunogen Type	protein
Immunogen Description	Fusion protein of human SF1
Target Name	SF1
Other Names	BBP; MBBP; ZFM1; ZNF162; D11S636; ZCCHC25
Accession No.	Swiss-Prot#: Q15637 Gene ID: 7536
Uniprot	Q15637
GeneID	7536;
Calculated MW	68kd
Concentration	1mg/ml
Formulation	Rabbit IgG in pH7.4 PBS, 0.05% NaN ₃ , 40% Glycerol.
Storage	Store at -20°C

Application Details

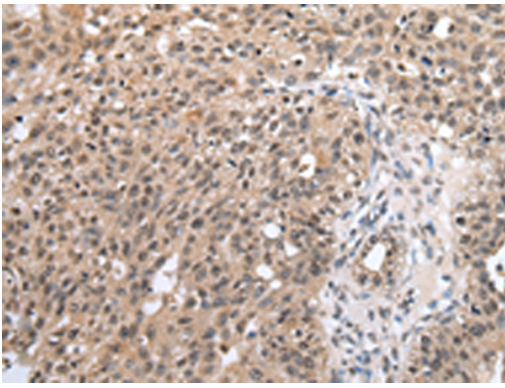
Western blotting: 1:200-1:1000

Immunohistochemistry: 1:25-1:100

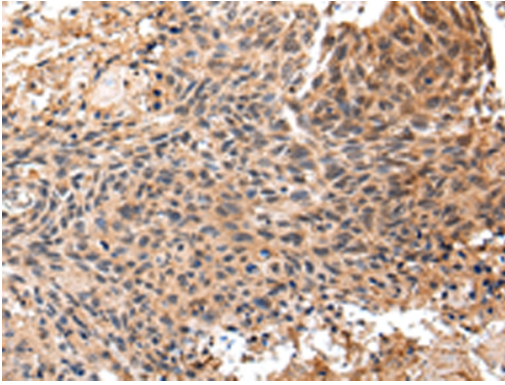
Images



Gel: 6%SDS-PAGE
Lysate: 40 µg
Lane: Hepg2 cell
Primary antibody: 1/400 dilution
Secondary antibody: Goat anti rabbit IgG at 1/8000 dilution
Exposure time: 3 minutes



Immunohistochemical analysis of paraffin-embedded Human breast cancer tissue using #43060 at dilution 1/20.



Immunohistochemical analysis of paraffin-embedded Human esophagus cancer tissue using #43060 at dilution 1/20.

Background

This gene encodes a nuclear pre-mRNA splicing factor. The encoded protein specifically recognizes the intron branch point sequence and is required for the early stages of spliceosome assembly. Alternate splicing results in multiple transcript variants.?

Note: This product is for in vitro research use only