

H6PD Antibody

Catalog No: #43061

Orders: order@signalwayantibody.comSupport: tech@signalwayantibody.com

Description

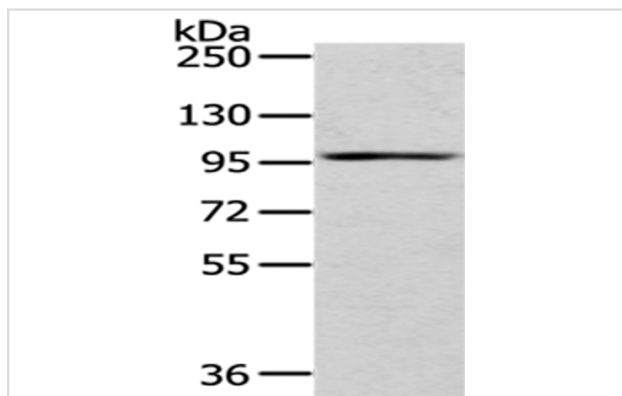
| | |
|-----------------------|---|
| Product Name | H6PD Antibody |
| Host Species | Rabbit |
| Clonality | Polyclonal |
| Purification | Antigen affinity purification. |
| Applications | WB IHC |
| Species Reactivity | Hu Ms |
| Specificity | The antibody detects endogenous levels of total H6PD protein. |
| Immunogen Type | protein |
| Immunogen Description | Fusion protein of human H6PD |
| Target Name | H6PD |
| Other Names | GDH; G6PDH; CORTRD1 |
| Accession No. | Swiss-Prot#: O95479Gene ID: 9563 |
| Uniprot | O95479 |
| GeneID | 9563; |
| Calculated MW | 89kd |
| Concentration | 1mg/ml |
| Formulation | Rabbit IgG in pH7.4 PBS, 0.05% NaN ₃ , 40% Glycerol. |
| Storage | Store at -20°C |

Application Details

Western blotting: 1:200-1:1000

Immunohistochemistry: 1:25-1:100

Images



Gel: 6%SDS-PAGE

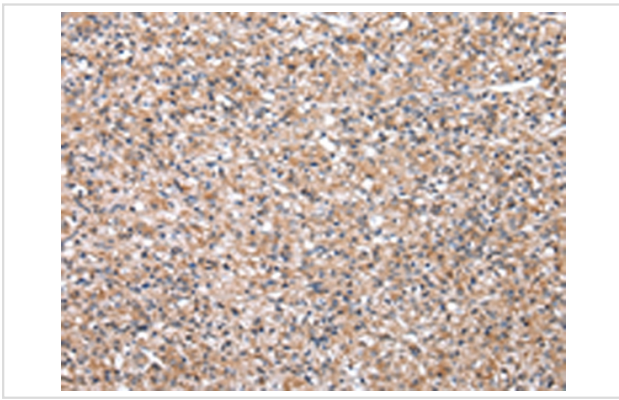
Lysate: 40 µg

Lane: Mouse liver tissue

Primary antibody: 1/400 dilution

Secondary antibody: Goat anti rabbit IgG at 1/8000 dilution

Exposure time: 40 seconds



Immunohistochemical analysis of paraffin-embedded Human prostate cancer tissue using #43061 at dilution 1/20. (Original magnification: B1F• 200)

Background

There are 2 forms of glucose-6-phosphate dehydrogenase. G form is X-linked and H form, encoded by this gene, is autosomally linked. This H form shows activity with other hexose-6-phosphates, especially galactose-6-phosphate, whereas the G form is specific for glucose-6-phosphate. Both forms are present in most tissues, but H form is not found in red cells.?

Note: This product is for in vitro research use only