

POLE3 Antibody

Catalog No: #43062

Orders: order@signalwayantibody.comSupport: tech@signalwayantibody.com

Description

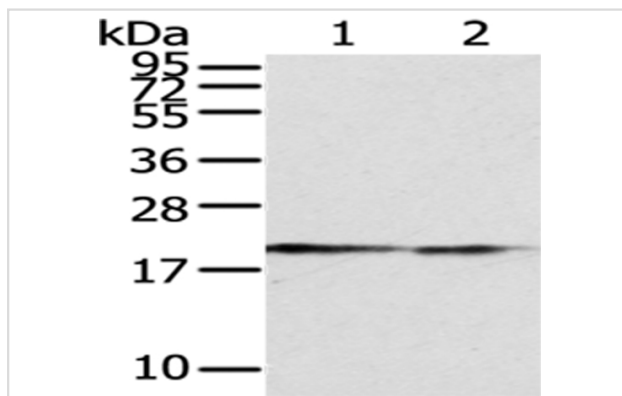
Product Name	POLE3 Antibody
Host Species	Rabbit
Clonality	Polyclonal
Purification	Antigen affinity purification.
Applications	WB IHC
Species Reactivity	Hu
Specificity	The antibody detects endogenous levels of total POLE3 protein.
Immunogen Type	protein
Immunogen Description	Fusion protein of human POLE3
Target Name	POLE3
Other Names	p17; YBL1; CHRAC17; CHARAC17
Accession No.	Swiss-Prot#: Q9NRF9 Gene ID: 54107
Uniprot	Q9NRF9
GeneID	54107;
Calculated MW	17kd
Concentration	1mg/ml
Formulation	Rabbit IgG in pH7.4 PBS, 0.05% NaN ₃ , 40% Glycerol.
Storage	Store at -20°C

Application Details

Western blotting: 1:200-1:1000

Immunohistochemistry: 1:50-1:200

Images



Gel: 12%SDS-PAGE

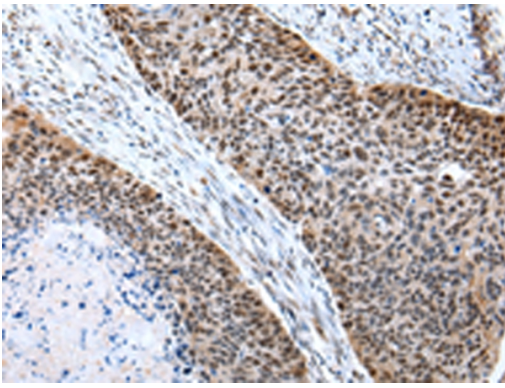
Lysate: 40 µg

Lane 1-2: Hepg2 and MCF7 cell

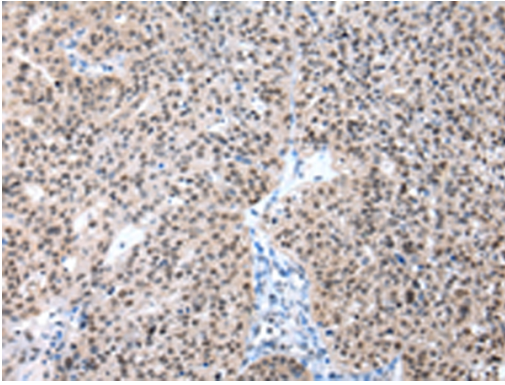
Primary antibody: 1/400 dilution

Secondary antibody: Goat anti rabbit IgG at 1/8000 dilution

Exposure time: 5 minutes



Immunohistochemical analysis of paraffin-embedded Human esophagus cancer tissue using #43062 at dilution 1/20.



Immunohistochemical analysis of paraffin-embedded Human prostate cancer tissue using #43062 at dilution 1/20.

Background

POLE3 is a histone-fold protein that interacts with other histone-fold proteins to bind DNA in a sequence-independent manner. These histone-fold protein dimers combine within larger enzymatic complexes for DNA transcription, replication, and packaging.

Note: This product is for in vitro research use only