

CYP20A1 Antibody

Catalog No: #43065

Orders: order@signalwayantibody.comSupport: tech@signalwayantibody.com

Description

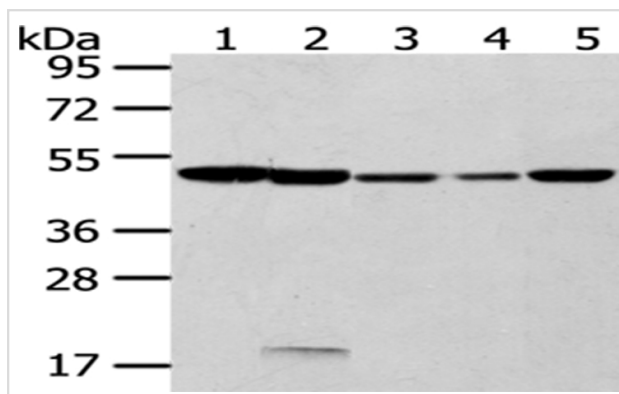
Product Name	CYP20A1 Antibody
Host Species	Rabbit
Clonality	Polyclonal
Purification	Antigen affinity purification.
Applications	WB IHC
Species Reactivity	Hu Ms
Specificity	The antibody detects endogenous levels of total CYP20A1 protein.
Immunogen Description	Fusion protein of human CYP20A1
Target Name	CYP20A1
Other Names	CYP-M
Accession No.	Swiss-Prot#: Q6UW02Gene ID: 57404
Uniprot	Q6UW02
GeneID	57404;
Calculated MW	52kd
Concentration	1mg/ml
Formulation	Rabbit IgG in pH7.4 PBS, 0.05% NaN ₃ , 40% Glycerol.
Storage	Store at -20°C

Application Details

Western blotting: 1:1000-1:5000

Immunohistochemistry: 1:100-1:200

Images



Gel: 8%SDS-PAGE

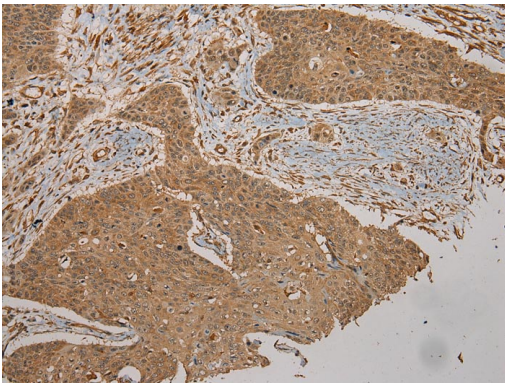
Lysate: 40 µg

Lane 1-5: Hela and K562 cell, Mouse lung tissue, PC3 and hepg2 cell

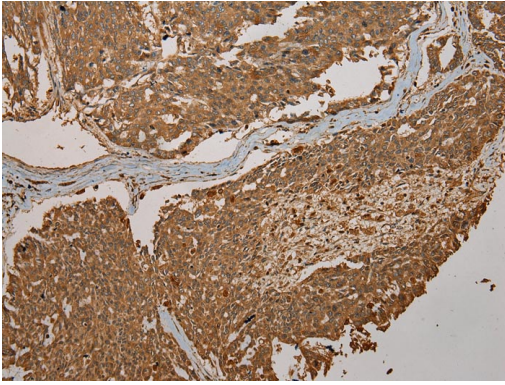
Primary antibody: 1/400 dilution

Secondary antibody: Goat anti rabbit IgG at 1/8000 dilution

Exposure time: 5 seconds



Immunohistochemical analysis of paraffin-embedded Human Esophagus cancer tissue using #43065 at dilution 1/200.



Immunohistochemical analysis of paraffin-embedded Human Liver cancer tissue using #43065 at dilution 1/200.

Background

This gene encodes a member of the cytochrome P450 superfamily of enzymes. The cytochrome P450 proteins are monooxygenases that catalyze many reactions involved in drug metabolism and synthesis of cholesterol, steroids and other lipids. This protein lacks one amino acid of the conserved heme binding site. It also lacks the conserved I-helix motif AGX(D,E)T, suggesting that its substrate may carry its own oxygen.

Note: This product is for in vitro research use only