

CCT2 Antibody

Catalog No: #43067

Orders: order@signalwayantibody.com

Support: tech@signalwayantibody.com

Description

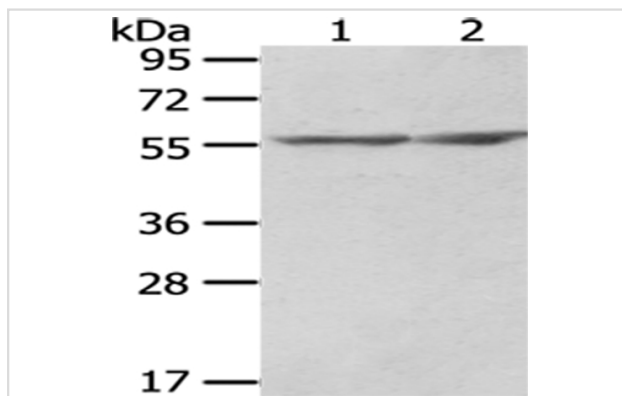
Product Name	CCT2 Antibody
Host Species	Rabbit
Clonality	Polyclonal
Purification	Antigen affinity purification.
Applications	WB IHC
Species Reactivity	Hu
Specificity	The antibody detects endogenous levels of total CCT2 protein.
Immunogen Type	protein
Immunogen Description	Fusion protein of human CCT2
Target Name	CCT2
Other Names	CCTB; 99D8.1; PRO1633; CCT-beta; HEL-S-100n; TCP-1-beta
Accession No.	Swiss-Prot#: P78371 Gene ID: 10576
Uniprot	P78371
GeneID	10576;
Calculated MW	58kd
Concentration	1mg/ml
Formulation	Rabbit IgG in pH7.4 PBS, 0.05% NaN ₃ , 40% Glycerol.
Storage	Store at -20°C

Application Details

Western blotting: 1:200-1:1000

Immunohistochemistry: 1:25-1:100

Images



Gel: 8%SDS-PAGE

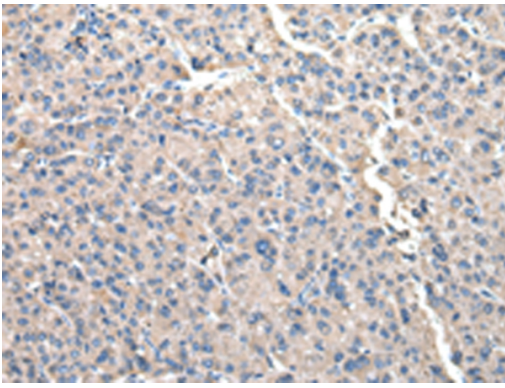
Lysate: 40 µg

Lane 1-2: MCF7 and K562 cell

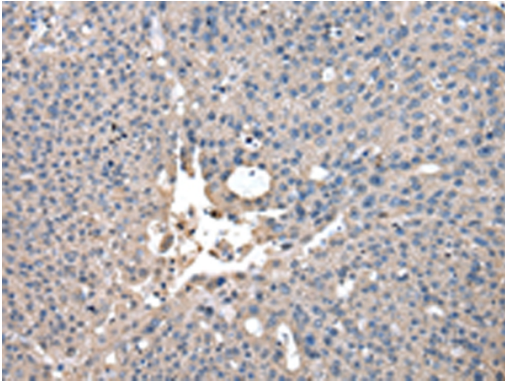
Primary antibody: 1/400 dilution

Secondary antibody: Goat anti rabbit IgG at 1/8000 dilution

Exposure time: 1 second



Immunohistochemical analysis of paraffin-embedded Human liver cancer tissue using #43067 at dilution 1/20.



Immunohistochemical analysis of paraffin-embedded Human breast cancer tissue using #43067 at dilution 1/20.

Background

The protein encoded by this gene is a molecular chaperone that is a member of the chaperonin containing TCP1 complex (CCT), also known as the TCP1 ring complex (TRiC). This complex consists of two identical stacked rings, each containing eight different proteins. Unfolded polypeptides enter the central cavity of the complex and are folded in an ATP-dependent manner. The complex folds various proteins, including actin and tubulin. Two transcript variants encoding different isoforms have been found for this gene.

Note: This product is for in vitro research use only