

CCT5 Antibody

Catalog No: #43069

Orders: order@signalwayantibody.com

Support: tech@signalwayantibody.com

Description

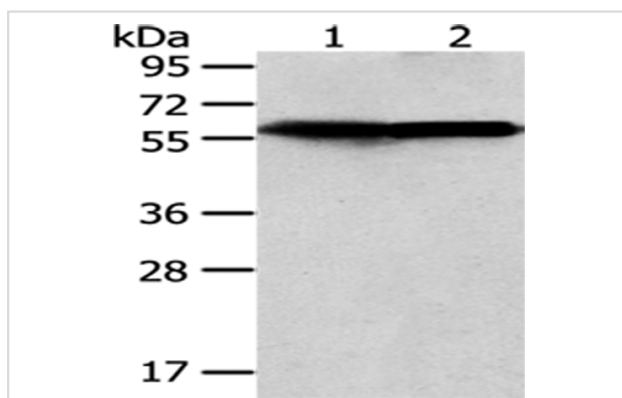
Product Name	CCT5 Antibody
Host Species	Rabbit
Clonality	Polyclonal
Purification	Antigen affinity purification.
Applications	WB IHC
Species Reactivity	Hu Ms
Specificity	The antibody detects endogenous levels of total CCT5 protein.
Immunogen Type	protein
Immunogen Description	Fusion protein of human CCT5
Target Name	CCT5
Other Names	CCTE; HEL-S-69; CCT-epsilon; TCP-1-epsilon
Accession No.	Swiss-Prot#: P48643 Gene ID: 22948
Uniprot	P48643
GeneID	22948;
Calculated MW	60kd
Concentration	1mg/ml
Formulation	Rabbit IgG in pH7.4 PBS, 0.05% NaN ₃ , 40% Glycerol.
Storage	Store at -20°C

Application Details

Western blotting: 1:500-1:2000

Immunohistochemistry: 1:20-1:100

Images



Gel: 8%SDS-PAGE

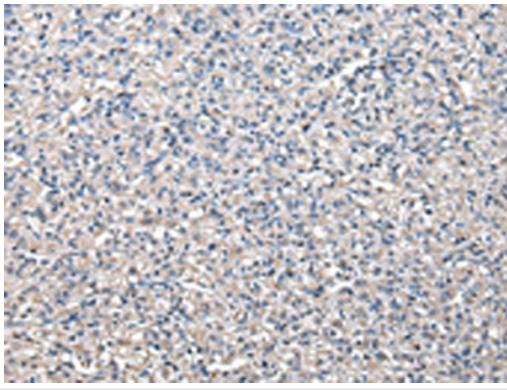
Lysate: 40 µg

Lane 1-2: HeLa cell and mouse brain tissue

Primary antibody: 1/400 dilution

Secondary antibody: Goat anti rabbit IgG at 1/8000 dilution

Exposure time: 5 seconds



Immunohistochemical analysis of paraffin-embedded Human prostate cancer tissue using #43069 at dilution 1/20. (Original magnification: B1F• 200)

Background

The protein encoded by this gene is a molecular chaperone that is a member of the chaperonin containing TCP1 complex (CCT), also known as the TCP1 ring complex (TRiC). This complex consists of two identical stacked rings, each containing eight different proteins. Unfolded polypeptides enter the central cavity of the complex and are folded in an ATP-dependent manner. The complex folds various proteins, including actin and tubulin.?

Note: This product is for in vitro research use only