

CPM Antibody

Catalog No: #43071

Orders: order@signalwayantibody.comSupport: tech@signalwayantibody.com

Description

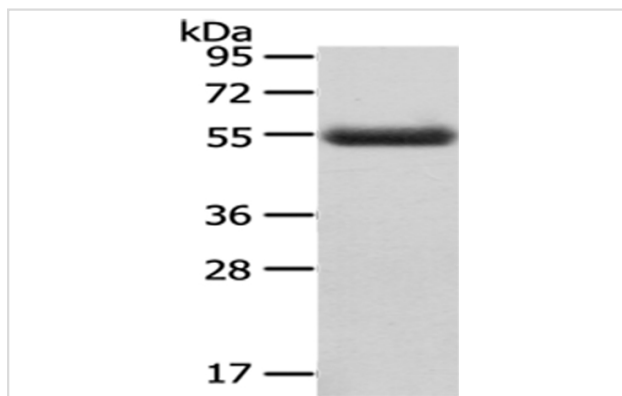
Product Name	CPM Antibody
Host Species	Rabbit
Clonality	Polyclonal
Purification	Antigen affinity purification.
Applications	WB IHC
Species Reactivity	Hu
Specificity	The antibody detects endogenous levels of total CPM protein.
Immunogen Type	protein
Immunogen Description	Fusion protein of human CPM
Target Name	CPM
Other Names	Carboxypeptidase M; CBPM
Accession No.	Swiss-Prot#: P14384 Gene ID: 1368
Uniprot	P14384
GeneID	1368;
Calculated MW	51kd
Concentration	1mg/ml
Formulation	Rabbit IgG in pH7.4 PBS, 0.05% NaN ₃ , 40% Glycerol.
Storage	Store at -20°C

Application Details

Western blotting: 1:500-1:2000

Immunohistochemistry: 1:25-1:100

Images



Gel: 8%SDS-PAGE

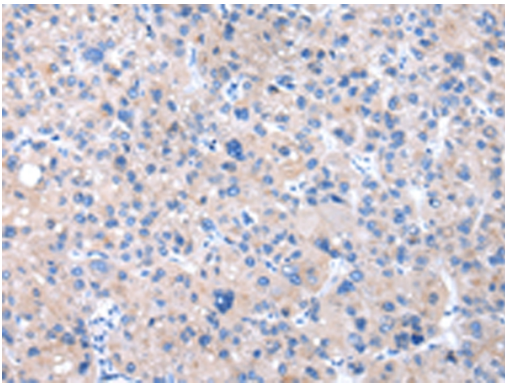
Lysate: 40 µg

Lane: Human placenta tissue

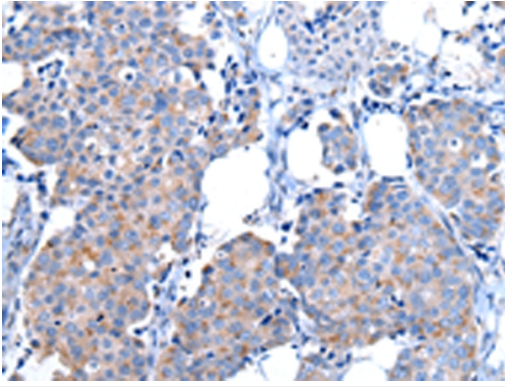
Primary antibody: 1/400 dilution

Secondary antibody: Goat anti rabbit IgG at 1/8000 dilution

Exposure time: 1 minute



Immunohistochemical analysis of paraffin-embedded Human liver cancer tissue using #43071 at dilution 1/20.



Immunohistochemical analysis of paraffin-embedded Human breast cancer tissue using #43071 at dilution 1/20.

Background

The protein encoded by this gene is a membrane-bound arginine/lysine carboxypeptidase. Its expression is associated with monocyte to macrophage differentiation. This encoded protein contains hydrophobic regions at the amino and carboxy termini and has 6 potential asparagine-linked glycosylation sites. The active site residues of carboxypeptidases A and B are conserved in this protein. Three alternatively spliced transcript variants encoding the same protein have been described for this gene.?

Note: This product is for in vitro research use only