

EEF1B2 Antibody

Catalog No: #43073

Orders: order@signalwayantibody.com

Support: tech@signalwayantibody.com

Description

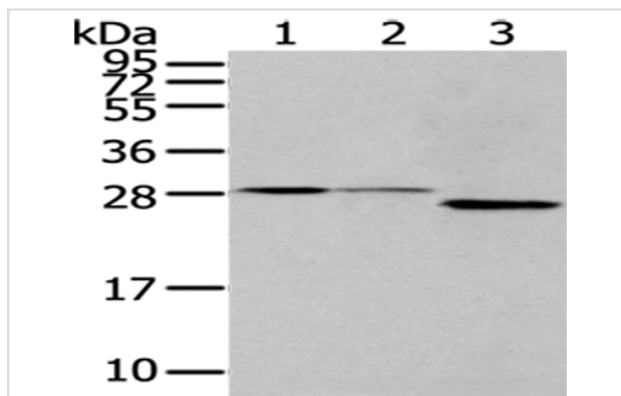
Product Name	EEF1B2 Antibody
Host Species	Rabbit
Clonality	Polyclonal
Purification	Antigen affinity purification.
Applications	WB IHC
Species Reactivity	Hu
Specificity	The antibody detects endogenous levels of total EEF1B2 protein.
Immunogen Type	protein
Immunogen Description	Fusion protein of human EEF1B2
Target Name	EEF1B2
Other Names	EF1B; EEF1B; EEF1B1
Accession No.	Swiss-Prot#: P24534 Gene ID: 1933
Uniprot	P24534
GeneID	1933;
Calculated MW	25kd
Concentration	1mg/ml
Formulation	Rabbit IgG in pH7.4 PBS, 0.05% NaN ₃ , 40% Glycerol.
Storage	Store at -20°C

Application Details

Western blotting: 1:500-1:2000

Immunohistochemistry: 1:25-1:100

Images



Gel: 12%SDS-PAGE

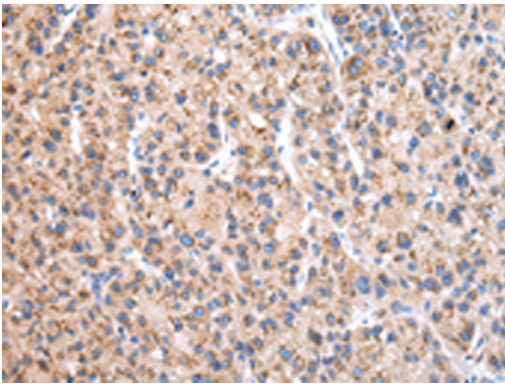
Lysate: 40 µg

Lane 1-3: HeLa, hepg2 and 293T cell

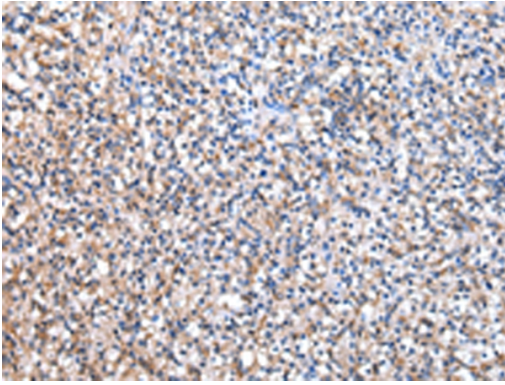
Primary antibody: 1/400 dilution

Secondary antibody: Goat anti rabbit IgG at 1/8000 dilution

Exposure time: 10 seconds



Immunohistochemical analysis of paraffin-embedded Human liver cancer tissue using #43073 at dilution 1/20.



Immunohistochemical analysis of paraffin-embedded Human prostate cancer tissue using #43073 at dilution 1/20.

Background

This gene encodes a translation elongation factor. The protein is a guanine nucleotide exchange factor involved in the transfer of aminoacylated tRNAs to the ribosome. Alternative splicing results in three transcript variants which differ only in the 5' UTR.

Note: This product is for in vitro research use only