

Description

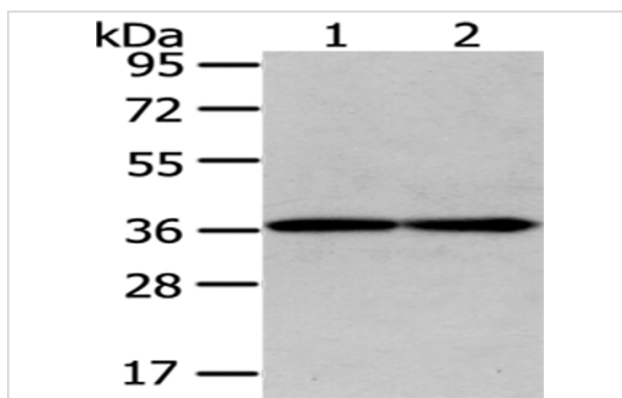
Product Name	GALE Antibody
Host Species	Rabbit
Clonality	Polyclonal
Purification	Antigen affinity purification.
Applications	WB IHC
Species Reactivity	Hu
Specificity	The antibody detects endogenous levels of total GALE protein.
Immunogen Type	protein
Immunogen Description	Fusion protein of human GALE
Target Name	GALE
Other Names	SDR1E1
Accession No.	Swiss-Prot#: Q14376Gene ID: 2582
Uniprot	Q14376
GeneID	2582;
Calculated MW	38kd
Concentration	0.6mg/ml
Formulation	Rabbit IgG in pH7.4 PBS, 0.05% NaN ₃ , 40% Glycerol.
Storage	Store at -20°C

Application Details

Western blotting: 1:500-1:2000

Immunohistochemistry: 1:100-1:200

Images



Gel: 8%SDS-PAGE

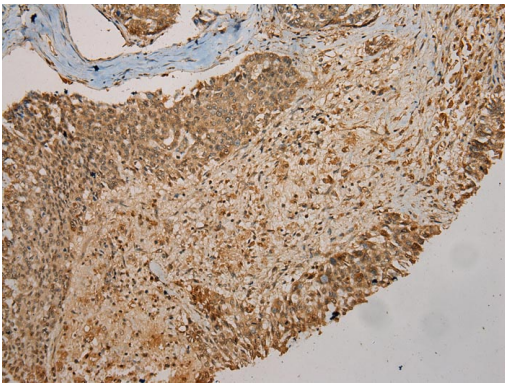
Lysate: 40 µg

Lane 1-2: Hepg2 and MCF7 cell

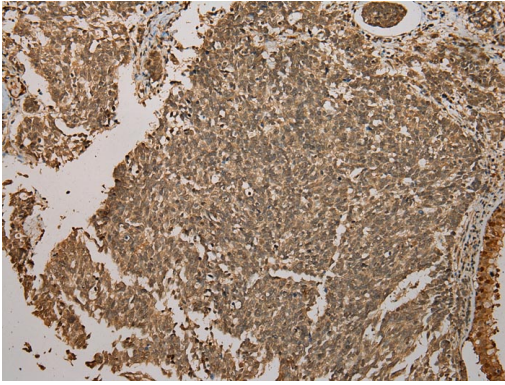
Primary antibody: 1/400 dilution

Secondary antibody: Goat anti rabbit IgG at 1/8000 dilution

Exposure time: 10 seconds



Immunohistochemical analysis of paraffin-embedded Human Liver cancer tissue using #43075 at dilution 1/200.



Immunohistochemical analysis of paraffin-embedded Human Lung cancer tissue using #43075 at dilution 1/200.

Background

This gene encodes UDP-galactose-4-epimerase which catalyzes two distinct but analogous reactions: the epimerization of UDP-glucose to UDP-galactose, and the epimerization of UDP-N-acetylglucosamine to UDP-N-acetylgalactosamine. The bifunctional nature of the enzyme has the important metabolic consequence that mutant cells (or individuals) are dependent not only on exogenous galactose, but also on exogenous N-acetylgalactosamine as a necessary precursor for the synthesis of glycoproteins and glycolipids.

Note: This product is for in vitro research use only