

GAMT Antibody

Catalog No: #43076

Orders: order@signalwayantibody.com

Support: tech@signalwayantibody.com

Description

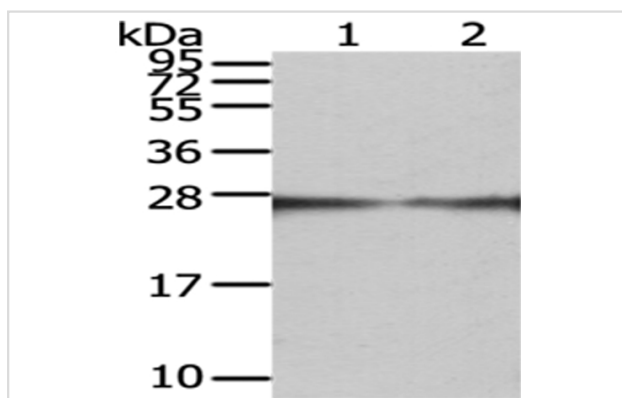
Product Name	GAMT Antibody
Host Species	Rabbit
Clonality	Polyclonal
Purification	Antigen affinity purification.
Applications	WB IHC
Species Reactivity	Hu
Specificity	The antibody detects endogenous levels of total GAMT protein.
Immunogen Type	protein
Immunogen Description	Fusion protein of human GAMT
Target Name	GAMT
Other Names	PIG2; CCDS2; TP53I2; HEL-S-20
Accession No.	Swiss-Prot#: Q14353 Gene ID: 2593
Uniprot	Q14353
GeneID	2593;
Calculated MW	26kd
Concentration	0.6mg/ml
Formulation	Rabbit IgG in pH7.4 PBS, 0.05% NaN ₃ , 40% Glycerol.
Storage	Store at -20°C

Application Details

Western blotting: 1:200-1:1000

Immunohistochemistry: 1:100-1:200

Images



Gel: 12%SDS-PAGE

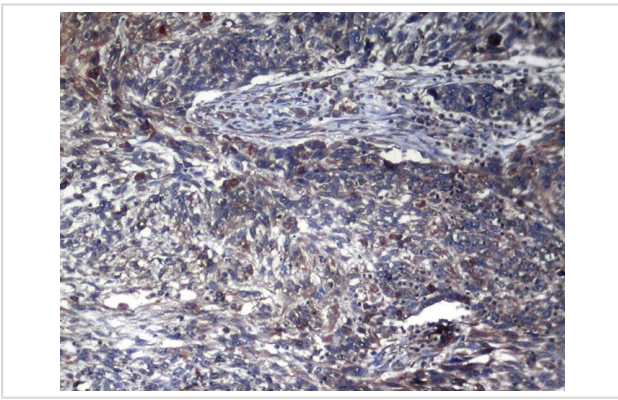
Lysate: 40 µg

Lane 1-2: Hepg2 and hela cell

Primary antibody: 1/400 dilution

Secondary antibody: Goat anti rabbit IgG at 1/8000 dilution

Exposure time: 5 seconds



Immunohistochemical analysis of paraffin-embedded Human Esophagus cancer tissue using #43076 at dilution 1/100.

Background

The protein encoded by this gene is a methyltransferase that converts guanidoacetate to creatine, using S-adenosylmethionine as the methyl donor. Defects in this gene have been implicated in neurologic syndromes and muscular hypotonia, probably due to creatine deficiency and accumulation of guanidinoacetate in the brain of affected individuals. Two transcript variants encoding different isoforms have been described for this gene. Pseudogenes of this gene are found on chromosomes 2 and 13.

Note: This product is for in vitro research use only