

## NHLRC1 Antibody

Catalog No: #43080

Orders: order@signalwayantibody.com

Support: tech@signalwayantibody.com

## Description

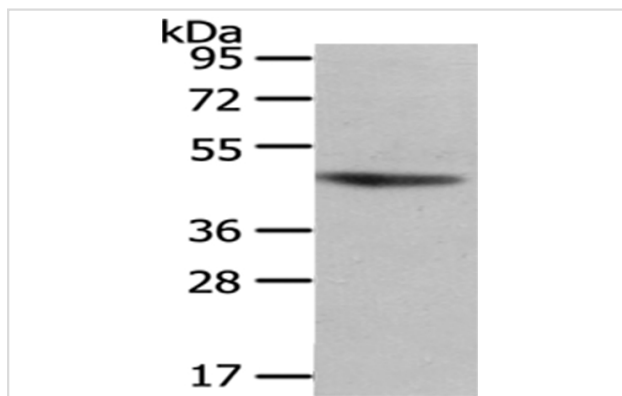
Product Name	NHLRC1 Antibody
Host Species	Rabbit
Clonality	Polyclonal
Purification	Antigen affinity purification.
Applications	WB
Species Reactivity	Hu
Specificity	The antibody detects endogenous levels of total NHLRC1 protein.
Immunogen Type	protein
Immunogen Description	Fusion protein of human NHLRC1
Target Name	NHLRC1
Other Names	EPM2A; EPM2B; MALIN; bA204B7.2
Accession No.	Swiss-Prot#: Q6VVV1 Gene ID: 378884
Uniprot	Q6VVV1
GeneID	378884;
Calculated MW	42kd
Concentration	1mg/ml
Formulation	Rabbit IgG in pH7.4 PBS, 0.05% NaN <sub>3</sub> , 40% Glycerol.
Storage	Store at -20°C

## Application Details

Western blotting: 1:200-1:1000

Immunohistochemistry: 1:25-1:100

## Images



Gel: 8%SDS-PAGE

Lysate: 40 µg

Lane: Lo2 cell

Primary antibody: 1/400 dilution

Secondary antibody: Goat anti rabbit IgG at 1/8000 dilution

Exposure time: 3 seconds

## Background

The protein encoded by this gene is a single subunit E3 ubiquitin ligase. Laforin is polyubiquitinated by the encoded protein. Defects in this intronless

gene lead to an accumulation of laforin and onset of Lafora disease, also known as progressive myoclonic epilepsy type 2 (EPM2).

---

Note: This product is for in vitro research use only