

PPP2R1B Antibody

Catalog No: #43083

Orders: order@signalwayantibody.com

Support: tech@signalwayantibody.com

Description

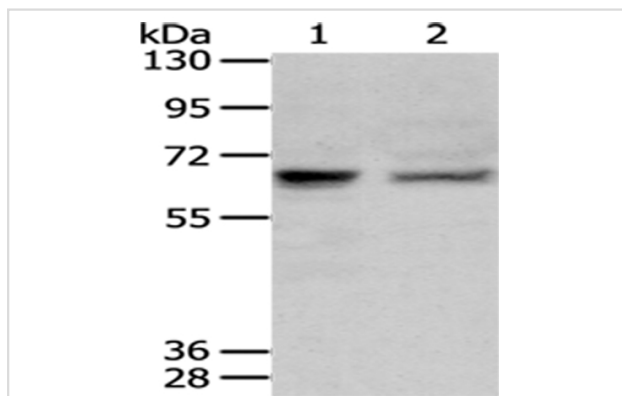
Product Name	PPP2R1B Antibody
Host Species	Rabbit
Clonality	Polyclonal
Purification	Antigen affinity purification.
Applications	WB IHC
Species Reactivity	Hu
Specificity	The antibody detects endogenous levels of total PPP2R1B protein.
Immunogen Type	protein
Immunogen Description	Fusion protein of human PPP2R1B
Target Name	PPP2R1B
Other Names	PR65B; PP2A-Abeta
Accession No.	Swiss-Prot#: P30154 Gene ID: 5519
Uniprot	P30154
GeneID	5519;
Calculated MW	66kd
Concentration	1mg/ml
Formulation	Rabbit IgG in pH7.4 PBS, 0.05% NaN ₃ , 40% Glycerol.
Storage	Store at -20°C

Application Details

Western blotting: 1:200-1:1000

Immunohistochemistry: 1:20-1:100

Images



Gel: 6%SDS-PAGE

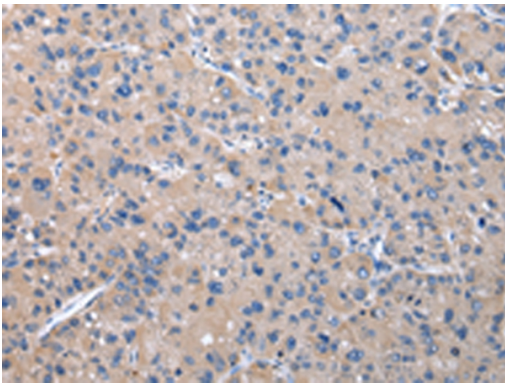
Lysate: 40 µg

Lane 1-2: K562 cell and human fetal liver tissue

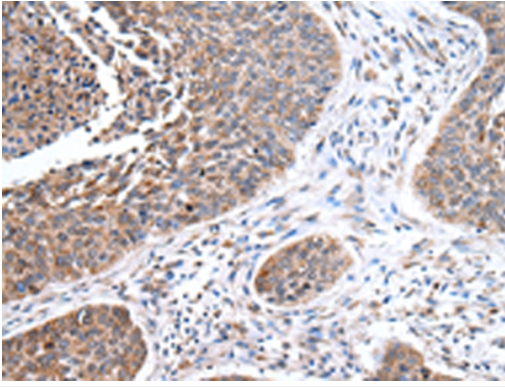
Primary antibody: 1/400 dilution

Secondary antibody: Goat anti rabbit IgG at 1/8000 dilution

Exposure time: 10 seconds



Immunohistochemical analysis of paraffin-embedded Human liver cancer tissue using #43083 at dilution 1/20.



Immunohistochemical analysis of paraffin-embedded Human lung cancer tissue using #43083 at dilution 1/20.

Background

This gene encodes a constant regulatory subunit of protein phosphatase 2. Protein phosphatase 2 is one of the four major Ser/Thr phosphatases, and it is implicated in the negative control of cell growth and division. It consists of a common heteromeric core enzyme, which is composed of a catalytic subunit and a constant regulatory subunit, that associates with a variety of regulatory subunits. The constant regulatory subunit A serves as a scaffolding molecule to coordinate the assembly of the catalytic subunit and a variable regulatory B subunit.?

Note: This product is for in vitro research use only