

INS Antibody

Catalog No: #43087

Orders: order@signalwayantibody.comSupport: tech@signalwayantibody.com

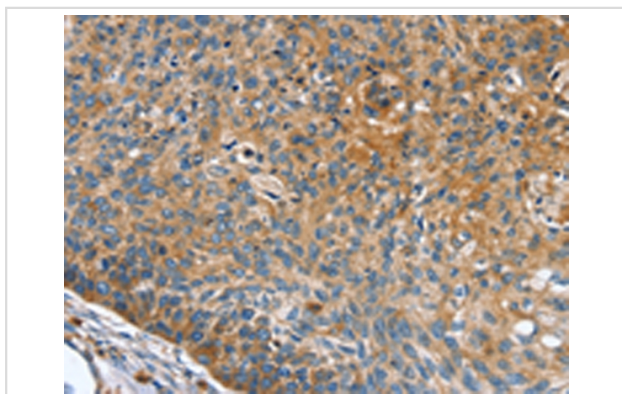
Description

Product Name	INS Antibody
Host Species	Rabbit
Clonality	Polyclonal
Purification	Antigen affinity purification.
Applications	IHC
Species Reactivity	Hu
Specificity	The antibody detects endogenous levels of total INS protein.
Immunogen Type	peptide
Immunogen Description	Synthetic peptide of human INS
Target Name	INS
Other Names	IDDM; ILPR; IRDN; IDDM1; IDDM2; MODY10
Accession No.	Swiss-Prot#: P01308Gene ID: 3630
Uniprot	P01308
GeneID	3630;
Concentration	1.9mg/ml
Formulation	Rabbit IgG in pH7.4 PBS, 0.05% NaN ₃ , 40% Glycerol.
Storage	Store at -20°C

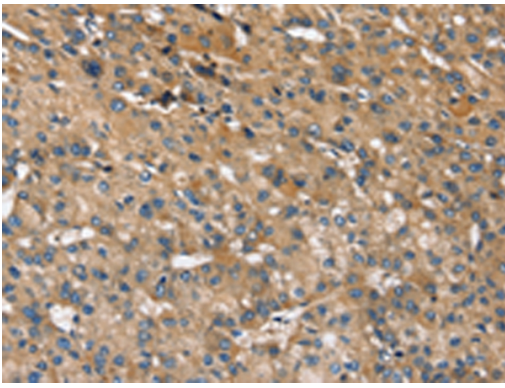
Application Details

Immunohistochemistry: 1:25-1:100

Images



Immunohistochemical analysis of paraffin-embedded Human esophagus cancer tissue using #43087 at dilution 1/35.



Immunohistochemical analysis of paraffin-embedded Human liver cancer tissue using #43087 at dilution 1/35.

Background

After removal of the precursor signal peptide, proinsulin is post-translationally cleaved into three peptides: the B chain and A chain peptides, which are covalently linked via two disulfide bonds to form insulin, and C-peptide. Binding of insulin to the insulin receptor (INSR) stimulates glucose uptake. A multitude of mutant alleles with phenotypic effects have been identified. There is a read-through gene, INS-IGF2, which overlaps with this gene at the 5' region and with the IGF2 gene at the 3' region. Alternative splicing results in multiple transcript variants.

Note: This product is for in vitro research use only