

MKI67/ki67 Antibody

Catalog No: #43095

Orders: order@signalwayantibody.comSupport: tech@signalwayantibody.com

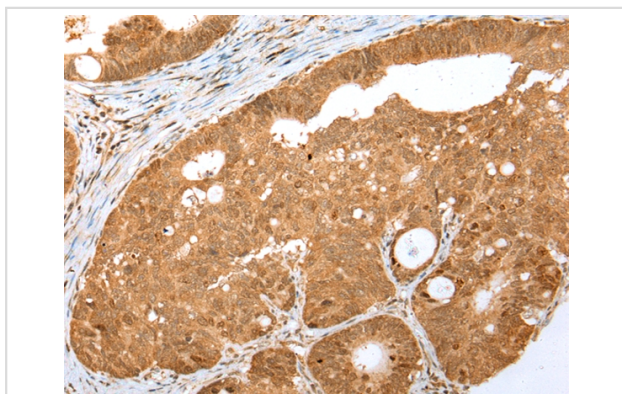
Description

Product Name	MKI67/ki67 Antibody
Host Species	Rabbit
Clonality	Polyclonal
Purification	Antigen affinity purification.
Applications	IHC
Species Reactivity	Hu
Specificity	The antibody detects endogenous levels of total MKI67/ki67 protein.
Immunogen Type	peptide
Immunogen Description	Synthetic peptide of human MKI67/ki67
Target Name	MKI67/ki67
Other Names	KIA; MIB-; MIB-1; PPP1R105
Accession No.	Swiss-Prot#: P46013Gene ID: 4288
Uniprot	P46013
GeneID	4288;
Concentration	0.8mg/ml
Formulation	Rabbit IgG in pH7.4 PBS, 0.05% NaN ₃ , 40% Glycerol.
Storage	Store at -20°C

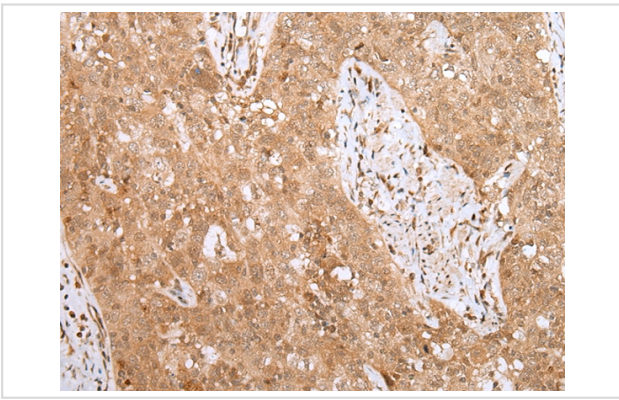
Application Details

Immunohistochemistry: 1:25-1:100

Images



Immunohistochemical analysis of paraffin-embedded Human gastric cancer tissue using #43095 at dilution 1/20.



Immunohistochemical analysis of paraffin-embedded Human esophagus cancer tissue using #43095 at dilution 1/20.

Background

This gene encodes a nuclear protein that is associated with and may be necessary for cellular proliferation. Alternatively spliced transcript variants have been described. A related pseudogene exists on chromosome X.

Note: This product is for in vitro research use only