

## MASP2 Antibody

Catalog No: #43097

Orders: [order@signalwayantibody.com](mailto:order@signalwayantibody.com)Support: [tech@signalwayantibody.com](mailto:tech@signalwayantibody.com)

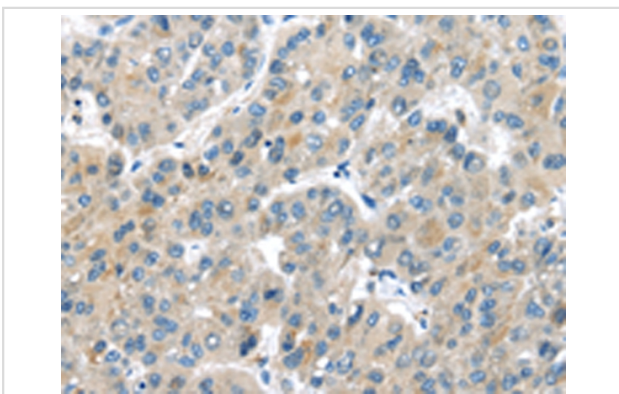
## Description

Product Name	MASP2 Antibody
Host Species	Rabbit
Clonality	Polyclonal
Purification	Antigen affinity purification.
Applications	IHC
Species Reactivity	Hu
Specificity	The antibody detects endogenous levels of total MASP2 protein.
Immunogen Type	peptide
Immunogen Description	Synthetic peptide of human MASP2
Target Name	MASP2
Other Names	sMAP; MAP19; MASP-2; MASP1P1
Accession No.	Swiss-Prot#: O00187Gene ID: 10747
Uniprot	O00187
GeneID	10747;
Concentration	2.3mg/ml
Formulation	Rabbit IgG in pH7.4 PBS, 0.05% NaN <sub>3</sub> , 40% Glycerol.
Storage	Store at -20°C

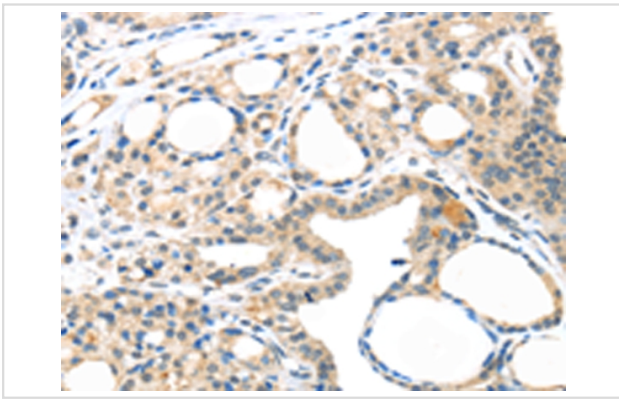
## Application Details

Immunohistochemistry: 1:25-1:100

## Images



Immunohistochemical analysis of paraffin-embedded Human liver cancer tissue using #43097 at dilution 1/35.



Immunohistochemical analysis of paraffin-embedded Human thyroid cancer tissue using #43097 at dilution 1/35.

## Background

The Ra-reactive factor (RARF) is a complement-dependent bactericidal factor that binds to the Ra and R2 polysaccharides expressed by certain enterobacteria. Alternate splicing of this gene results in two transcript variants encoding two RARF components that are involved in the mannan-binding lectin pathway of complement activation. The longer isoform is cleaved into two chains which form a heterodimer linked by a disulfide bond. The encoded proteins are members of the trypsin family of peptidases.

Note: This product is for in vitro research use only