

CHRNA1 Antibody

Catalog No: #43098

Orders: order@signalwayantibody.comSupport: tech@signalwayantibody.com

Description

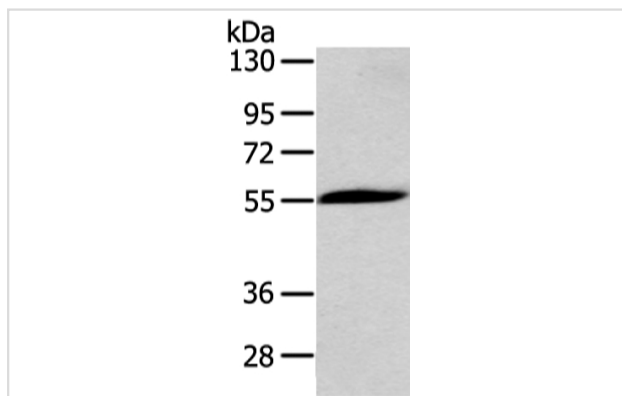
Product Name	CHRNA1 Antibody
Host Species	Rabbit
Clonality	Polyclonal
Purification	Antigen affinity purification.
Applications	WB IHC
Species Reactivity	Hu Ms
Specificity	The antibody detects endogenous levels of total CHRNA1 protein.
Immunogen Type	peptide
Immunogen Description	Synthetic peptide of human CHRNA1
Target Name	CHRNA1
Other Names	ACHRA; ACHRD; CHRNA; CMS2A; FCCMS; SCCMS
Accession No.	Swiss-Prot#: P02708Gene ID: 1134
Uniprot	P02708
GeneID	1134;
Calculated MW	55kd
Concentration	1.3mg/ml
Formulation	Rabbit IgG in pH7.4 PBS, 0.05% NaN ₃ , 40% Glycerol.
Storage	Store at -20°C

Application Details

Western blotting: 1:200-1:1000

Immunohistochemistry: 1:10-1:50

Images



Gel: 8%SDS-PAGE

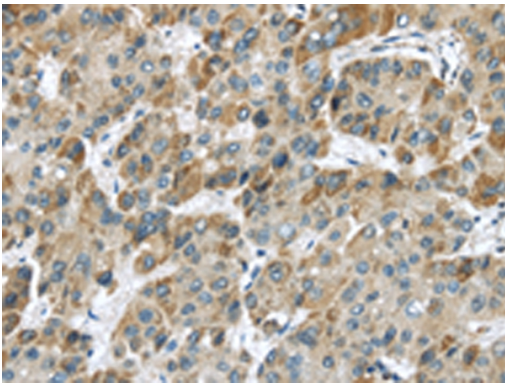
Lysate: 60 µg

Lane: Mouse heart tissue

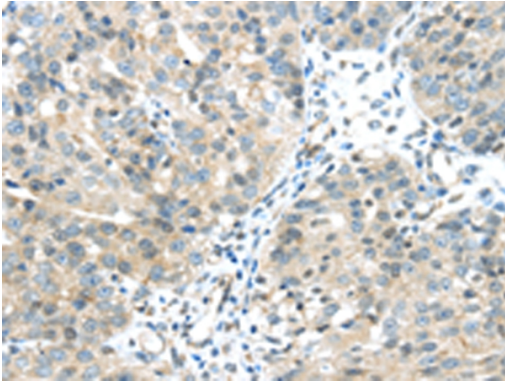
Primary antibody: 1/200 dilution

Secondary antibody: Goat anti rabbit IgG at 1/8000 dilution

Exposure time: 3 minutes



Immunohistochemical analysis of paraffin-embedded Human liver cancer tissue using #43098 at dilution 1/20.



Immunohistochemical analysis of paraffin-embedded Human breast cancer tissue using #43098 at dilution 1/20.

Background

The muscle acetylcholine receptor consists of 5 subunits of 4 different types: 2 alpha subunits and 1 each of the beta, gamma, and delta subunits. This gene encodes an alpha subunit that plays a role in acetylcholine binding/channel gating. Alternatively spliced transcript variants encoding different isoforms have been identified.

Note: This product is for in vitro research use only