

## PKD2L1 Antibody

Catalog No: #43099

Orders: [order@signalwayantibody.com](mailto:order@signalwayantibody.com)Support: [tech@signalwayantibody.com](mailto:tech@signalwayantibody.com)

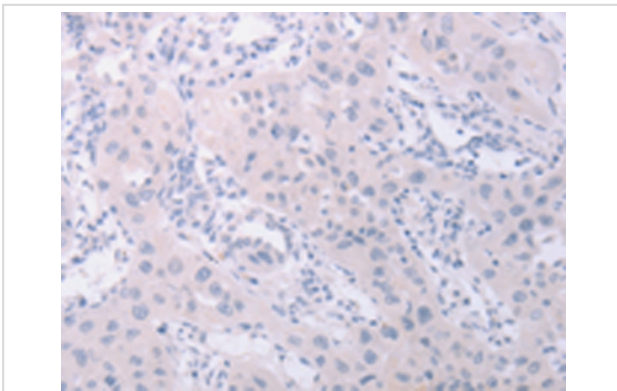
## Description

Product Name	PKD2L1 Antibody
Host Species	Rabbit
Clonality	Polyclonal
Purification	Antigen affinity purification.
Applications	IHC
Species Reactivity	Hu
Specificity	The antibody detects endogenous levels of total PKD2L1 protein.
Immunogen Type	peptide
Immunogen Description	Synthetic peptide of human PKD2L1
Target Name	PKD2L1
Other Names	PCL; PKDL; PKD2L; TRPP3
Accession No.	Swiss-Prot#: Q9P0L9Gene ID: 9033
Uniprot	Q9P0L9
GeneID	9033;
Concentration	1.5mg/ml
Formulation	Rabbit IgG in pH7.4 PBS, 0.05% NaN <sub>3</sub> , 40% Glycerol.
Storage	Store at -20°C

## Application Details

Immunohistochemistry: 1:25-1:100

## Images



Immunohistochemical analysis of paraffin-embedded Human lung cancer tissue using #43099 at dilution 1/40,

## Background

This gene encodes a member of the polycystin protein family. The encoded protein contains multiple transmembrane domains, and cytoplasmic N- and C-termini. The protein may be an integral membrane protein involved in cell-cell/matrix interactions. This protein functions as a calcium-regulated nonselective cation channel. Two transcript variants encoding different isoforms have been found for this gene.

---

Note: This product is for in vitro research use only